

| DSE MARKET SUMMARY | | | | | | Tuesday, March 8, 2022 | | |
|----------------------------------|---|--------------------|---------------|--------------------|------------|------------------------|-------------|------------|
| Sl. Sector | Market Cap. | V% | A/D | Weight | Pre.Weight | Weight % | | |
| Item | # | BDT | V/TPS | Ratio | TO W% | 08.03.2022 | 07.03.2022 | Change |
| 1 Bank | 33 | 70302 Cro. | 0.35% | 1.7 | 8.6% | 13.47% | 13.50% | -0.25% |
| 2 Pharma | 32 | 70383 Cro. | 1.14% | 5.0 | 15.8% | 13.49% | 13.51% | -0.16% |
| 3 Telecom | 3 | 64690 Cro. | 0.20% | 2.0 | 1.4% | 12.39% | 12.39% | 0.00% |
| 4 Engineering | 42 | 52978 Cro. | 1.06% | 5.8 | 9.1% | 10.15% | 10.11% | 0.39% |
| 5 Fuel & Power | 23 | 46587 Cro. | 0.51% | 2.8 | 4.1% | 8.93% | 8.87% | 0.69% |
| 6 Food & Allied | 21 | 40544 Cro. | 1.95% | 1.1 | 7.9% | 7.77% | 7.84% | -0.91% |
| 7 Miscellaneous | 14 | 24486 Cro. | 1.34% | 11.0 | 12.7% | 4.69% | 4.72% | -0.52% |
| 8 NBFI | 23 | 18049 Cro. | 0.81% | 3.5 | 4.2% | 3.46% | 3.46% | -0.19% |
| 9 Textile | 58 | 16802 Cro. | 1.26% | 4.9 | 11.1% | 3.22% | 3.18% | 1.24% |
| 10 Cement | 7 | 11591 Cro. | 0.88% | 1.3 | 2.4% | 2.22% | 2.17% | 2.52% |
| 11 G. Insurance | 40 | 11116 Cro. | 0.69% | 0.8 | 4.2% | 2.13% | 2.15% | -0.98% |
| L. Insurance | 13 | 7090 Cro. | 0.76% | 2.7 | 2.7% | 1.36% | 1.35% | 0.52% |
| 12 Mutual Fund | 36 | 3798 Cro. | 0.64% | 1.5 | 1.3% | 0.73% | 0.73% | -0.03% |
| 13 IT | 11 | 3679 Cro. | 3.92% | 10.0 | 4.8% | 0.70% | 0.70% | 1.37% |
| 14 Tannery | 6 | 3761 Cro. | 1.16% | 0.2 | 2.1% | 0.72% | 0.73% | -0.92% |
| 15 Paper | 6 | 3162 Cro. | 0.00% | 0.5 | 1.7% | 0.61% | 0.61% | -0.89% |
| 16 Ceramic | 5 | 2976 Cro. | 0.80% | 1.0 | 0.9% | 0.57% | 0.56% | 1.85% |
| 17 Services & R.Estate | 4 | 2622 Cro. | 1.32% | 100.0 | 1.6% | 0.50% | 0.49% | 2.10% |
| 18 Travel & Leisure | 4 | 2632 Cro. | 0.71% | 1.0 | 0.6% | 0.50% | 0.51% | -0.15% |
| 19 Jute | 3 | 196 Cro. | 0.49% | 100.0 | 0.1% | 0.04% | 0.04% | 0.64% |
| Large Cap.(Mega) | 13 | 219344 Cro. | 0.59% | 0.8 | 19.6% | 42.03% | 42.16% | -0.33% |
| Large Cap. | 35 | 72014 Cro. | 0.91% | 2.2 | 14.8% | 13.80% | 13.68% | 0.83% |
| Mid Cap.(Mega) | 20 | 10892 Cro. | 1.37% | 5.0 | 2.5% | 2.09% | 2.06% | 1.46% |
| Mid Cap. | 34 | 7342 Cro. | 0.95% | 9.5 | 6.3% | 1.41% | 1.39% | 1.47% |
| Small Cap.(Mega) | 30 | 11975 Cro. | 1.09% | 1.1 | 5.9% | 2.29% | 2.30% | -0.12% |
| Small Cap. | 21 | 4239 Cro. | 1.01% | 5.0 | 5.0% | 0.81% | 0.80% | 1.97% |
| Micro Cap. | 37 | 3234 Cro. | 1.37% | 3.4 | 3.6% | 0.62% | 0.61% | 1.24% |
| Z Category | 28 | 3261 Cro. | 0.63% | 0.0 | 1.9% | 0.62% | 0.62% | 1.12% |
| Bank, NBFI, Insurance | 109 | 112995 Cro. | 0.78% | 1.5 | 19.7% | 21.65% | 21.72% | -0.34% |
| Low Paid-Up | 55 | 17002 Cro. | 1.40% | 0.0 | 10.9% | 3.26% | 3.28% | -0.71% |
| MNC Stock | 13 | 129137 Cro. | 0.82% | 0.7 | 7.6% | 24.73% | 24.82% | -0.35% |
| Govt. Stock | 15 | 22038 Cro. | 1.18% | 2.8 | 4.8% | 4.22% | 4.16% | 1.37% |
| Bond & Debenture | 237 | 63132 Cro. | | | | 12.36% | 12.39% | DSEX Index |
| Equity Market | 384 | 455241 Cro. | | | | 87.64% | 87.61% | 17.77 |
| DSEX Index Point | | | | | 17.77 | 6474.29 | 6456.51 | 0.28% |
| DS30 Index Point | | | | | -0.32 | 2374.07 | 2374.39 | -0.01% |
| DSES Index Point | | | | | 4.67 | 1399.08 | 1394.40 | 0.34% |
| Total | 621 | | Market Cap. > | | | 522171 Cro. | 521935 Cro. | 237 Cro. |
| A/D Ratio | 1.9 | | TRADE SUMMARY | | | | | Change |
| Issue Advanced | 217 | Trades | | | | 174734 | 183682 | -4.87% |
| Issue Declined | 116 | Volume | | | | 206575604 | 206815979 | -0.12% |
| Issue Unchanged | 45 | Total Value (BDT) | | | | 746.09 Cro. | 740.26 Cro. | 0.79% |
| Total Issue Traded | 378 | Block & Bond trade | 2.8% | | | 20.52 Cro. | 45.70 Cro. | -55.09% |
| MARKET TREND SUMMARY | | | | | | | | |
| Statement -1: | Pharma, Miscellaneous & Textile Sector hold top position by turnover. | | | | | | | |
| Statement -2: | Bank+NBFI+Insurance, Large Cap(Mega) & Large Cap. share topped by Market Cap. | | | | | | | |
| Statement -3: | Cement, Ceramic & Service sector shows positive performance today. | | | | | | | |
| Statement -4: | Next Index Resistance level 6609 points & Support level 6285 points. | | | | | | | |
| DSEX Index > | Down Trend | MACD Divergence | -47.69 | Market P/E | 14.99 | | | |
| DSEX Index > | Index Above MA(3) | Index Below MA(9) | | Index Below MA(21) | | | | |
| PREPARED BY: SHAH MD. AMAN ULLAH | | | | | | | | |

| SECTOR TURNOVER HEAT MAP | | | | | | | | | | |
|--------------------------|------|---|----|----|----|----|----|----|---|-----------|
| Sector | Avg | Leading sector trend expected to continue | | | | | | | | YTD (R) % |
| | Rank | Date | | | | | | | 8 | |
| Miscellaneous | 1.6 | 2 | 1 | 1 | 1 | 1 | 3 | 2 | | -1.4% |
| Textile | 2.4 | 1 | 2 | 2 | 3 | 4 | 2 | 3 | | 4.9% |
| Pharma | 2.9 | 4 | 3 | 3 | 6 | 2 | 1 | 1 | | 0.5% |
| Engineering | 4.3 | 3 | 5 | 4 | 5 | 5 | 4 | 4 | | -7.6% |
| Insurance | 5.3 | 7 | 4 | 5 | 2 | 6 | 6 | 7 | | -15.6% |
| Bank | 6.0 | 5 | 6 | 6 | 7 | 8 | 5 | 5 | | -3.1% |
| Food & Allied | 7.1 | 6 | 7 | 7 | 10 | 7 | 7 | 6 | | -9.2% |
| Fuel & Power | 8.6 | 9 | 8 | 8 | 8 | 9 | 8 | 10 | | -1.0% |
| Tannery | 9.4 | 8 | 10 | 12 | 9 | 3 | 12 | 12 | | 10.2% |
| NBFI | 9.9 | 11 | 9 | 9 | 11 | 11 | 9 | 9 | | -15.4% |
| IT | 11.1 | 12 | 12 | 11 | 12 | 13 | 10 | 8 | | -8.2% |
| Paper | 11.3 | 10 | 14 | 13 | 4 | 10 | 15 | 13 | | -7.3% |
| Cement | 13.3 | 13 | 13 | 14 | 15 | 16 | 11 | 11 | | -9.1% |
| Services & R.Eas | 13.4 | 18 | 11 | 10 | 13 | 14 | 14 | 14 | | 2.5% |
| Telecom | 14.9 | 16 | 16 | 15 | 14 | 15 | 13 | 15 | | -6.2% |
| Ceramic | 16.3 | 15 | 15 | 16 | 16 | 18 | 17 | 17 | | -3.0% |
| Mutual Fund | 16.3 | 17 | 18 | 18 | 17 | 12 | 16 | 16 | | -5.6% |
| Travel & Leisure | 17.0 | 14 | 17 | 17 | 18 | 17 | 18 | 18 | | 5.1% |
| Jute | 19.0 | 19 | 19 | 19 | 19 | 19 | 19 | 19 | | -4.9% |

| MARKET CAP. HEAT MAP | | | | | | | | | | |
|----------------------|---|----|----|----|----|----|----|----|-----------|-------|
| Market cap. Avg Rank | Leading Market Cap trend expected to continue | | | | | | | | YTD (R) % | |
| Bank, NBFI, Insu | 1.6 | 1 | 2 | 2 | 1 | 3 | 1 | 1 | | -5.1% |
| Large Cap.(Mega | 2.0 | 2 | 1 | 1 | 5 | 1 | 2 | 2 | | -5.0% |
| Large Cap. | 3.0 | 4 | 3 | 3 | 3 | 2 | 3 | 3 | | -1.4% |
| Low Paid-Up | 3.6 | 3 | 4 | 4 | 2 | 4 | 4 | 4 | | 1.5% |
| Small Cap.(Mega | 5.1 | 5 | 5 | 5 | 4 | 5 | 6 | 6 | | -0.6% |
| Mid Cap. | 5.7 | 6 | 6 | 6 | 6 | 6 | 5 | 5 | | 2.9% |
| Micro Cap. | 7.4 | 8 | 7 | 7 | 7 | 7 | 8 | 8 | | 4.9% |
| Small Cap. | 7.7 | 7 | 9 | 8 | 8 | 8 | 7 | 7 | | 3.2% |
| Mid Cap.(Mega) | 9.3 | 10 | 8 | 10 | 10 | 9 | 9 | 9 | | -4.2% |
| Z Category | 9.6 | 9 | 10 | 9 | 9 | 10 | 10 | 10 | | -1.5% |

| DSEX TECHNICAL INDICATOR | | | | NEW 52 WEEK HIGH/LOW | | DSEX CANDLE | |
|--------------------------|---------|--------------------|------|------------------------|--------------------------------|-------------|--|
| TODAY DSEX | 6474.29 | | | SECURITIES HITTING THE | | | |
| INDEX MA(3) | 6465.40 | Index Above MA(3) | | HIGH | LOW | | |
| INDEX MA(9) | 6637.01 | Index Below MA(9) | | | | | |
| INDEX MA(21) | 6850.38 | Index Below MA(21) | | | | | |
| MACD POINT | Down | -120.00 | | 52 WEEK- | 0 | | |
| SIGNAL POINT | Trend | -72.31 | | | | | |
| TODAY DSEX | OPEN | HIGH | LOW | CLOSE | Yearly Higher Price Check List | | |
| | 6457 | 6502 | 6317 | 6474 | | | |

| Macro Economy | | | | SL. | INSTRUMEN | % | Price | P.HIGH | EPS:Q-Q(G) | Y-Y(G) |
|------------------------|------------|--------------|-------|-------------------------------|-------------|-------|-------|--------|------------|--------|
| Last Update: 06-Feb-22 | | | | | 1 ISLAMIBAN | 0.0% | 32.5 | 33.1 | | 64% |
| Indicator | Recent (M) | Previous (M) | % | | 2 CNATEX | 3.0% | 10.2 | 10.5 | | |
| Inflation Rate | 6.05% | 5.98% | 1.2% | | 3 TAMIJTEX | -1.9% | 292.3 | 301.7 | | 42% |
| GDP to Market Cap. | 14.86% | | | | 4 BDTHAIFOC | 9.8% | 43.5 | 44.9 | 62% | |
| Avg I% Rate | 3.99% | 3.99% | 0.0% | | 5 UTTARABAI | -0.4% | 26.5 | 27.4 | | -13% |
| \$ 1 USD - BDT | 85.90 | 85.33 | 0.7% | | 6 NEWLINE | 0.2% | 44.8 | 46.9 | -1% | 24% |
| Call Money Rate | 2.68% | 2.68% | 0.0% | Yearly Lower Price Check List | | | | | | |
| FX Reserve (\$ bn.) | 44.95 | 46.15 | -2.6% | SL. | INSTRUMEN | % | Price | P.LOW | EPS:Q-Q(G) | Y-Y(G) |
| Export Growth(Y-Y) | 24.29% | | | | 1 OLYMPIC | -2.1% | 137.1 | 140.0 | -12% | -33% |
| Import Growth(Y-Y) | 54.47% | | | | 2 ASIAINS | -1.5% | 74.3 | 75.4 | | |

SECTOR GAINER HEAT MAP

| Sum of > | Return | Date → | | | | | 8 | YTD (R)% |
|-----------------|--------|--------|-------|-------|-------|-------|--------|----------|
| Jute | -1.4% | -1.1% | 1.0% | 1.1% | -3.1% | 0.6% | -4.9% | |
| Mutual Fund | -1.5% | -1.3% | 0.2% | 2.2% | -2.6% | 0.0% | -5.6% | |
| IT | -2.5% | -0.5% | -0.1% | -1.3% | -1.9% | 1.4% | -8.2% | |
| Bank | -2.8% | -0.9% | 0.2% | -0.4% | -1.5% | -0.3% | -3.1% | |
| Fuel & Power | -2.8% | -0.9% | 0.3% | -0.9% | -1.9% | 0.7% | -1.0% | |
| Travel & Leisur | -2.9% | -0.3% | -0.7% | 0.7% | -2.4% | -0.2% | 5.1% | |
| Textile | -3.3% | -1.1% | 0.5% | -0.6% | -3.3% | 1.2% | 4.9% | |
| Paper | -3.4% | -1.4% | 0.8% | 1.5% | -3.5% | -0.9% | -7.3% | |
| Services & R.Ea | -3.7% | -0.5% | 0.1% | -1.7% | -3.7% | 2.1% | 2.5% | |
| Pharma | -3.7% | -0.4% | -0.1% | -0.6% | -2.3% | -0.2% | 0.5% | |
| Ceramic | -4.4% | -1.9% | 1.0% | -1.0% | -4.4% | 1.8% | -3.0% | |
| Miscellaneous | -4.9% | -0.3% | -0.2% | -0.8% | -3.1% | -0.5% | -1.4% | |
| Telecom | -5.0% | -1.3% | -1.2% | -1.4% | -1.0% | 0.0% | -6.2% | |
| Engineering | -5.1% | -1.3% | -0.5% | -1.6% | -2.1% | 0.4% | -7.6% | |
| L. Insurance | -5.3% | 0.1% | -0.2% | -2.1% | -3.6% | 0.5% | -8.0% | |
| Tannery | -6.1% | -1.3% | 0.3% | 0.1% | -4.3% | -0.9% | 10.2% | |
| Cement | -7.0% | -1.0% | -0.7% | -1.8% | -6.1% | 2.5% | -9.1% | |
| Food & Allied | -7.3% | -0.6% | 0.1% | -2.7% | -3.1% | -0.9% | -9.2% | |
| NBFI | -8.0% | -1.5% | -1.1% | -1.1% | -4.1% | -0.2% | -15.4% | |
| G. Insurance | -8.5% | -0.7% | -0.1% | -2.1% | -4.6% | -1.0% | -18.6% | |

MARKET CAP. GAINER HEAT MAP

| Sum of > | Return | Date → | | | | | 8 | YTD(R)% |
|-----------------|--------|--------|-------|-------|-------|-------|-------|---------|
| Z Category | -1.6% | 0.3% | 1.5% | 0.0% | -4.4% | 1.1% | -1.5% | |
| Mid Cap. | -2.7% | -1.6% | 0.7% | -0.3% | -3.1% | 1.5% | 2.9% | |
| Small Cap. | -3.1% | -1.6% | 0.8% | -0.7% | -3.5% | 2.0% | 3.2% | |
| Micro Cap. | -3.8% | -0.3% | 0.7% | -0.7% | -4.8% | 1.2% | 4.9% | |
| Govt. Stock | -3.8% | -0.9% | -0.8% | -0.8% | -2.7% | 1.4% | 0.4% | |
| Low Paid-Up | -3.9% | -1.3% | 0.5% | 0.3% | -2.7% | -0.7% | 1.5% | |
| Bank, NBFI, Ins | -4.0% | -0.7% | 0.0% | -0.7% | -2.3% | -0.3% | -5.1% | |
| Small Cap.(Mega | -4.3% | -1.4% | 0.2% | 0.1% | -3.1% | -0.1% | -0.6% | |
| Large Cap. | -4.3% | -1.1% | -0.1% | -1.0% | -3.0% | 0.8% | -1.4% | |
| Mid Cap.(Mega | -4.5% | -1.4% | -0.3% | -0.3% | -3.8% | 1.5% | -4.2% | |
| Large Cap.(Mega | -5.0% | -0.7% | -0.5% | -1.5% | -1.9% | -0.3% | -5.0% | |
| MNC Stock | -5.6% | -0.9% | -0.6% | -1.8% | -2.0% | -0.3% | -7.7% | |

ADVANCE-DECLINE RATIO & INDEX

| | | | | | |
|----------------------------|--------------|-------------|--------------|--------------|-------------|
| A/D Ratio Heat Map | 0.20 | 1.17 | 0.40 | 0.02 | 1.87 |
| DSEX Index % Change | -0.8% | 0.0% | -0.9% | -2.7% | 0.3% |

TOP SHARE BY MARKET CAPITALIZATION

| INSTRUMENT | % (+/-) | PRICE | E.P.S | W% | BDT (Cro.) | DDM(V) | P/E | 5Y Avg P/E | Q-Q(G) | Y-Y(G) | 5Y Avg (G) |
|------------|---------|--------|--------|------|------------|--------|------|------------|--------|--------|------------|
| GP | -0.4% | 316.4 | 25.28 | 8.2% | 42723.49 | | 12.5 | 15.6 | -4.7% | | 14.0% |
| WALTONHIL | -0.2% | 1050.6 | 29.46 | 6.1% | 31825.65 | | 35.7 | | -20.6% | -31.4% | 65.7% |
| BATBC | -1.2% | 566.7 | 27.72 | 5.9% | 30601.80 | 845 | 20.4 | 22.4 | -2.9% | 37.5% | 15.7% |
| SQURPHARMA | -0.7% | 210.9 | 21.76 | 3.6% | 18695.25 | 330 | 9.7 | 16.4 | -3.5% | 24.2% | 15.3% |
| ROBI | 0.6% | 35.7 | 0.43 | 3.6% | 18699.42 | | 83.7 | | | | 217.5% |
| RENATA | -1.9% | 1304.1 | 51.24 | 2.7% | 13979.04 | 1503 | 25.5 | 24.2 | -9.7% | 14.4% | 17.7% |
| UPGDCL | 0.0% | 245.8 | 23.68 | 2.7% | 14248.91 | | 10.4 | 19.5 | 18.4% | 24.6% | -8.4% |
| BEXIMCO | 0.5% | 148.0 | 17.34 | 2.5% | 12969.52 | 48 | 8.5 | 19.8 | 5.5% | 351.6% | -2.7% |
| ICB | -0.7% | 102.0 | 3.48 | 1.6% | 8219.32 | | 29.3 | | | | -3.0% |
| BXPBARMA | 0.7% | 177.5 | 14.24 | 1.5% | 7918.49 | 178 | 12.5 | 14.4 | 8.5% | 43.8% | 18.2% |
| BERGERPBL | -2.9% | 1660.5 | 57.57 | 1.5% | 7701.05 | 1844 | 28.8 | 26.0 | 12.2% | 19.8% | 16.6% |
| LHBL | 3.4% | 64.1 | 3.34 | 1.4% | 7444.40 | | 19.2 | | -5.9% | | 13.0% |
| MARICO | -0.4% | 2350.4 | 120.11 | 1.4% | 7403.76 | 2403 | 19.6 | 20.9 | -4.3% | 13.5% | 13.6% |

| Sector Summary | | Trade | | | Volume | | | Turnover | | | T.O |
|-------------------|-------|-------|----------|------|----------|----------|------|----------|----------|------|-------|
| Sector | P/E | Today | Last day | % | Today | Last Day | % | Today | Last Day | % | W% |
| Bank | 7.4 | 11855 | 13476 | -12% | 39191780 | 37602551 | 4% | 62.21 | 58.17 | 7% | 8.6% |
| Telecom | 16.8 | 2705 | 4313 | -37% | 967727 | 2225103 | -57% | 10.36 | 14.36 | -28% | 1.4% |
| Pharma | 16.4 | 14010 | 13452 | 4% | 22147154 | 21653086 | 2% | 114.59 | 86.16 | 33% | 15.8% |
| Fuel & Power | 13.1 | 9535 | 10049 | -5% | 5502077 | 6089305 | -10% | 29.91 | 33.12 | -10% | 4.1% |
| Food & Allied | 28.3 | 20043 | 23424 | -14% | 8062649 | 7432373 | 8% | 57.44 | 49.41 | 16% | 7.9% |
| Engineering | 16.7 | 19252 | 18463 | 4% | 19568235 | 19893110 | -2% | 65.99 | 63.87 | 3% | 9.1% |
| NBFI | 23.8 | 7779 | 7430 | 5% | 11659979 | 10657092 | 9% | 30.79 | 30.89 | 0% | 4.2% |
| Textile | 20.1 | 22659 | 22464 | 1% | 43435144 | 43541326 | 0% | 80.80 | 84.31 | -4% | 11.1% |
| Cement | 30.1 | 4661 | 4385 | 6% | 2865954 | 3028461 | -5% | 17.07 | 17.90 | -5% | 2.4% |
| Miscellaneous | 5.5 | 11083 | 11138 | 0% | 8215371 | 7389238 | 11% | 92.08 | 78.95 | 17% | 12.7% |
| L. Insurance | | 5640 | 6036 | -7% | 2426491 | 2795210 | -13% | 19.50 | 23.51 | -17% | 2.7% |
| G. Insurance | 11.3 | 18845 | 20390 | -8% | 8223732 | 9031944 | -9% | 30.20 | 33.84 | -11% | 4.2% |
| Mutual Fund | | 2953 | 2870 | 3% | 13835743 | 12032307 | 15% | 9.59 | 9.18 | 4% | 1.3% |
| Ceramic | 26.3 | 2337 | 2208 | 6% | 1750487 | 1888020 | -7% | 6.44 | 8.00 | -19% | 0.9% |
| Tannery | 63.1 | 3373 | 3330 | 1% | 1211217 | 1417079 | -15% | 15.18 | 17.48 | -13% | 2.1% |
| Paper | 63.3 | 3353 | 3168 | 6% | 967592 | 760217 | 27% | 12.46 | 12.43 | 0% | 1.7% |
| Travel & Leisure | -34.5 | 1171 | 2912 | -60% | 1095106 | 1160492 | -6% | 4.53 | 4.77 | -5% | 0.6% |
| Services & Retail | 17.4 | 2881 | 2812 | 2% | 2908047 | 3500211 | -17% | 11.55 | 14.09 | -18% | 1.6% |
| IT | 20.7 | 5610 | 5190 | 8% | 10668917 | 8086707 | 32% | 34.64 | 28.28 | 22% | 4.8% |
| Jute | 52.2 | 299 | 575 | -48% | 17918 | 34251 | -48% | 0.44 | 0.80 | -45% | 0.1% |

INDEX MOVER(+)

| INSTRUMENT | PRICE | % | INDEX (+) | E.P.S | P/E | N.A.V | NO.# SHARE | Q-Q(G) | MARKET CAP. |
|------------|-------|------|-----------|-------|------|-------|------------|--------|-------------|
| LHBL | 64.1 | 3.4% | 3.49 | 3.3 | 19.2 | 13.4 | 1161373500 | -5.9% | 7444 Cro. |
| TITASGAS | 40 | 3.4% | 1.84 | 2.9 | 13.9 | 70.1 | 989221831 | 10.8% | 3957 Cro. |
| POWERGRID | 60.1 | 3.3% | 1.63 | 5.5 | 10.9 | 143.8 | 712726991 | -24.5% | 4262 Cro. |
| ROBI | 35.7 | 0.6% | 1.50 | 0.4 | 83.7 | 12.6 | 5237932895 | | 18699 Cro. |
| GPHISPAT | 51.4 | 4.7% | 1.00 | 4.3 | 11.7 | 17.6 | 436816480 | -4.0% | 2215 Cro. |
| ENVOYTEX | 42.1 | 9.6% | 0.89 | 2.7 | 15.4 | 38.4 | 167734767 | 226.2% | 706 Cro. |
| BEXIMCO | 148 | 0.5% | 0.88 | 17.3 | 8.5 | 69.8 | 876318879 | 5.5% | 12970 Cro. |
| BEACONPHAR | 222.2 | 1.2% | 0.86 | 5.2 | 42.9 | 12.9 | 231000000 | -14.8% | 5133 Cro. |
| SIBL | 14.7 | 4.3% | 0.84 | 1.1 | 13.6 | 19.3 | 984908844 | | 1448 Cro. |
| BXPBARMA | 177.5 | 0.7% | 0.83 | 14.2 | 12.5 | 73.0 | 446112089 | 8.5% | 7918 Cro. |
| BSCCL | 198 | 1.7% | 0.82 | 12.6 | 15.8 | 38.7 | 164905510 | -2.2% | 3267 Cro. |
| ORIONPHARM | 95.6 | 2.6% | 0.80 | 4.0 | 23.7 | 75.2 | 234000000 | 236.7% | 2237 Cro. |
| HEIDELBCEM | 284 | 5.9% | 0.78 | 13.2 | 21.1 | 82.7 | 56503590 | | 1571 Cro. |
| RAKCERAMIC | 44 | 2.8% | 0.73 | 2.1 | 20.8 | 18.0 | 427968701 | 8.2% | 1883 Cro. |
| ACMELAB | 86.6 | 2.9% | 0.73 | 10.3 | 8.4 | 86.7 | 211601700 | -6.7% | 1832 Cro. |

INDEX MOVER(-)

| INSTRUMENT | PRICE | % | INDEX (-) | E.P.S | P/E | N.A.V | NO.# SHARE | Q-Q(G) | MARKET CAP. |
|------------|--------|-------|-----------|-------|------|-------|------------|--------|-------------|
| BATBC | 566.7 | -1.2% | -5.17 | 27.7 | 20.4 | 492.2 | 540000000 | -2.9% | 30602 Cro. |
| BRACBANK | 48.7 | -4.5% | -4.58 | 3.8 | 12.7 | 36.6 | 1392172399 | | 6780 Cro. |
| RENATA | 1304.1 | -1.9% | -3.92 | 51.2 | 25.5 | 230.9 | 107192983 | -9.7% | 13979 Cro. |
| BERGERPBL | 1662 | -2.9% | -3.39 | 57.6 | 28.8 | 176.2 | 46377880 | 12.2% | 7701 Cro. |
| GP | 316.4 | -0.4% | -2.32 | 25.3 | 12.5 | 31.4 | 1350300022 | -4.7% | 42723 Cro. |
| SQURPHARMA | 210.9 | -0.7% | -1.77 | 21.8 | 9.7 | 86.0 | 886451011 | -3.5% | 18695 Cro. |
| ICB | 102.3 | -0.7% | -1.15 | 3.5 | 29.3 | 55.0 | 805815527 | | 8219 Cro. |
| WALTONHIL | 1050.6 | -0.2% | -0.87 | 29.5 | 35.7 | 243.3 | 302928343 | -20.6% | 31826 Cro. |
| OLYMPIC | 137.1 | -2.1% | -0.83 | 7.2 | 19.0 | 36.1 | 199938886 | -12.4% | 2741 Cro. |
| RECKITTBN | 5453.9 | -2.0% | -0.74 | 140.3 | 38.9 | 81.6 | 4725000 | | 2577 Cro. |
| SONALIPAPR | 722.3 | -3.1% | -0.73 | 23.3 | 30.9 | 336.9 | 21963460 | -12.4% | 1586 Cro. |
| RELIANCINS | 70.9 | -6.2% | -0.71 | 5.6 | 12.7 | 60.8 | 105161087 | 3.5% | 746 Cro. |
| BDFINANCE | 41.1 | -5.7% | -0.63 | 1.4 | 28.5 | 17.9 | 177581384 | -47.8% | 730 Cro. |

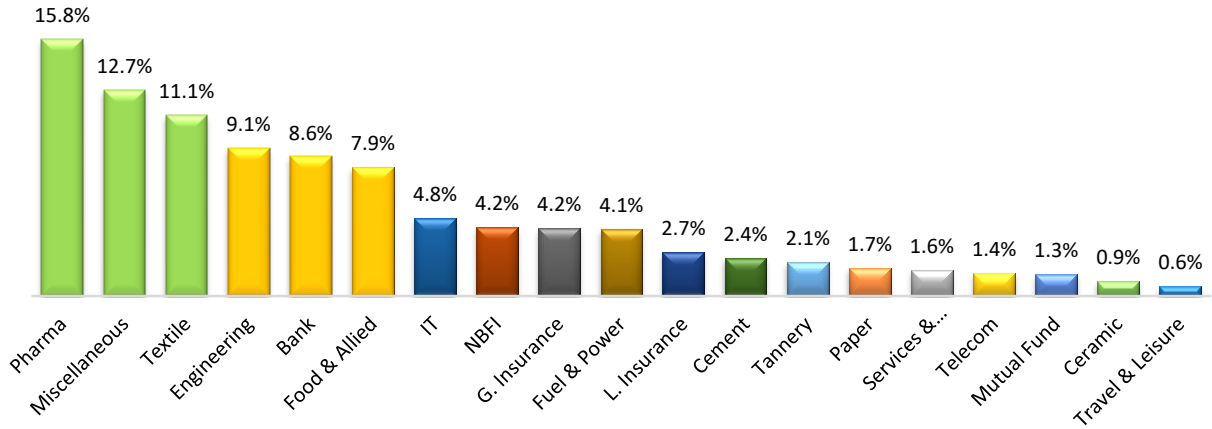
| TOP 20 BY GAINER | | | | | | TOP 20 BY VOLUME | | | | |
|---|------------|----------|--------|----------------|----------|---|---------|----------------|-----------------|-----------|
| INSTRUMENT | SECTOR | LTP* | CHANGE | VOLUME | V/TMV | INSTRUMENT | LTP* | HIGH | TRADE | VOLUME |
| BDTHAIFOOD | FOOD & AL | 43.5 | 9.8% | 2,336,662 | 1.1% | KEYACOSMET | 7.6 | 7.7 | 1,158 | 9,491,119 |
| SUNLIFEINS | INSURANC | 39.3 | 9.8% | 271,617 | 0.1% | NBL | 7.5 | 7.6 | 527 | 5,961,928 |
| BDCOM | IT | 28.4 | 9.7% | 2,019,299 | 1.0% | UNIONBANK | 12.0 | 12.1 | 2,260 | 5,753,700 |
| ENVOYTEX | TEXTILE | 42.1 | 9.6% | 25,590 | 0.0% | IFIC | 14.8 | 14.9 | 1,059 | 5,298,124 |
| INTECH | IT | 29.3 | 9.3% | 332,527 | 0.2% | AGNISYSL | 24.9 | 25.2 | 1,582 | 4,715,981 |
| BGIC | INSURANC | 48.9 | 8.4% | 133,096 | 0.1% | PDL | 12.4 | 12.7 | 1,181 | 4,326,907 |
| BIFC | NBFI | 6.5 | 8.3% | 27,132 | 0.0% | QUEENSOUTH | 23.5 | 23.8 | 2,051 | 4,292,880 |
| QUEENSOUTH | TEXTILE | 23.5 | 8.3% | 4,292,880 | 2.1% | BEXIMCO | 148.0 | 150.2 | 3,762 | 4,046,915 |
| IMAMBUTTON | PHARMA | 32.6 | 6.5% | 36,235 | 0.0% | DSSL | 18.6 | 18.9 | 1,072 | 3,602,005 |
| LOVELLO | FOOD & AL | 35.8 | 6.2% | 1,071,736 | 0.5% | ALIF | 14.0 | 14.2 | 1,265 | 3,484,959 |
| AGNISYSL | IT | 24.9 | 6.0% | 4,715,981 | 2.3% | ONEBANKLTD | 12.3 | 12.4 | 546 | 3,200,674 |
| HEIDELBCEM | CEMENT | 284.0 | 5.9% | 5,231 | 0.0% | FARCHEM | 12.2 | 12.6 | 1,021 | 2,867,416 |
| DSSL | TEXTILE | 18.6 | 5.7% | 3,602,005 | 1.7% | BBS | 22.5 | 23.0 | 1,712 | 2,852,368 |
| MALEKSPIN | TEXTILE | 29.0 | 5.5% | 900,431 | 0.4% | LANKABAFIN | 31.9 | 32.4 | 1,470 | 2,734,913 |
| ADNTEL | IT | 64.2 | 5.1% | 755,686 | 0.4% | YPL | 23.3 | 23.8 | 1,044 | 2,565,942 |
| BAYLEASING | NBFI | 27.4 | 5.0% | 1,473,858 | 0.7% | CNATEX | 10.2 | 10.3 | 620 | 2,540,525 |
| LEGACYFOOT | TANNERY | 60.3 | 4.9% | 33,894 | 0.0% | TRUSTB1MF | 5.6 | 5.6 | 271 | 2,516,758 |
| GPHISPAT | ENGINEERI | 51.4 | 4.7% | 1,302,399 | 0.6% | RINGSHINE | 9.9 | 9.9 | 705 | 2,480,295 |
| ISNLTD | IT | 43.0 | 4.6% | 161,130 | 0.1% | FIRSTSBANK | 11.5 | 11.5 | 618 | 2,404,302 |
| COPPERTECH | ENGINEERI | 35.6 | 4.4% | 377,832 | 0.2% | SAIFPOWER | 38.2 | 38.5 | 1,397 | 2,347,925 |
| TOP 20 BY TURNOVER(Cro.) | | | | | | TOP LOSER | | | | |
| INSTRUMENT | SECTOR | LTP* | VALUE | VOLUME | V/TO | INSTRUMENT | LTP* | HIGH | LOW | % |
| BEXIMCO | MISCELLAN | 148.0 | 59.6 | 4,046,915 | 8.0% | HWAWELLTEX | 41.2 | 45.9 | 40.6 | -8.2% |
| BSC | ENGINEERI | 108.0 | 22.3 | 2,083,163 | 3.0% | RELIANCINS | 70.9 | 72.4 | 68.7 | -6.2% |
| BEACONPHAR | PHARMA | 222.2 | 21.4 | 963,697 | 2.9% | BDFINANCE | 41.1 | 43.9 | 40.0 | -5.7% |
| SQURPHARMA | PHARMA | 210.9 | 20.7 | 981,736 | 2.8% | VAMLRBBF | 7.2 | 7.3 | 6.9 | -5.3% |
| BATBC | FOOD & AL | 566.7 | 18.6 | 330,911 | 2.5% | BNICL | 84.8 | 91.7 | 83.2 | -4.9% |
| LHBL | CEMENT | 64.1 | 12.7 | 2,050,110 | 1.7% | PRAGATIINS | 70.4 | 73.5 | 67.5 | -4.7% |
| ORIONPHARM | PHARMA | 95.6 | 11.8 | 1,253,831 | 1.6% | ARAMITCEM | 33.4 | 34.7 | 32.1 | -4.6% |
| AGNISYSL | IT | 24.9 | 11.6 | 4,715,981 | 1.6% | BRACBANK | 48.7 | 52.0 | 48.0 | -4.5% |
| FORTUNE | TANNERY | 115.0 | 11.2 | 979,454 | 1.5% | SAVAREFR | 194.5 | 202.8 | 187.8 | -3.5% |
| BRACBANK | BANK | 48.7 | 10.5 | 2,132,858 | 1.4% | EASTLAND | 32.1 | 33.3 | 30.6 | -3.3% |
| QUEENSOUTH | TEXTILE | 23.5 | 9.8 | 4,292,880 | 1.3% | BLOCK TRADE | | | 8-Mar-22 | |
| BDTHAIFOOD | FOOD & AL | 43.5 | 9.8 | 2,336,662 | 1.3% | INSTRUMENT | Cro. | INSTRUMENT | Cro. | |
| BXPHARMA | PHARMA | 177.5 | 9.3 | 536,302 | 1.3% | SQURPHARMA | 6.33 | MARICO | 0.46 | |
| SONALIPAPR | PAPER | 722.3 | 8.8 | 121,113 | 1.2% | BRACBANK | 2.58 | YPL | 0.46 | |
| SAIFPOWER | SERVICES & | 38.2 | 8.8 | 2,347,925 | 1.2% | GENEXIL | 2.56 | RANFOUNDRY | 0.45 | |
| LANKABAFIN | NBFI | 31.9 | 8.5 | 2,734,913 | 1.1% | BDCOM | 1.84 | ALLTEX | 0.35 | |
| TAMIJTEX | TEXTILE | 292.3 | 8.1 | 270,337 | 1.1% | FORTUNE | 1.16 | HRTEX | 0.32 | |
| IFIC | BANK | 14.8 | 7.7 | 5,298,124 | 1.0% | KTL | 0.95 | BSC | 0.30 | |
| OLYMPIC | FOOD & AL | 137.1 | 7.7 | 549,658 | 1.0% | DSSL | 0.90 | OTHER'S TOTAL | 1.36 | |
| KEYACOSMET | PHARMA | 7.6 | 7.2 | 9,491,119 | 0.1% | AAMRATECH | 0.50 | TOTAL = | 20.52 | |
| INTERNATIONAL COMMODITY MARKET @GMT 9:15 AM | | | | | | INTERNATIONAL STOCK MARKET @GMT 9:15 AM | | | | |
| Commodities | 8-Mar-22 | Change | % | Indices | | 8-Mar-22 | % | Point (+/-) | | |
| Crude Oil | \$ 121.80 | \$ 2.40 | 2.0% | Dow Jones Indu | 32817.38 | -2.37% | -797.42 | | | |
| Brent Oil | \$ 126.30 | \$ 3.09 | 2.5% | S&P 500 | 4201.09 | -2.95% | -127.78 | | | |
| Natural Gas | \$ 4.69 | -\$.14 | -2.9% | NASDAQ Comp | 12830.96 | -3.62% | -482.48 | | | |
| Gold | \$ 2012.60 | \$ 16.70 | 0.8% | FTSE 100 | 6961.02 | 0.02% | 1.54 | | | |
| Silver | \$ 26.41 | \$.69 | 2.7% | Nikkei 225 | 24790.95 | -1.71% | -430.46 | | | |
| Sugar | \$ 19.24 | -\$.03 | -0.2% | Shenzhen Comj | 12244.50 | -2.62% | -328.94 | | | |
| Soybeans | \$ 1679.75 | \$ 20.25 | 1.2% | Hang Seng Inde | 20765.87 | -1.39% | -291.76 | | | |
| Cotton | \$ 117.59 | \$.65 | 0.6% | S&P BSE SENSEI | 52813.36 | -0.06% | -29.39 | | | |

SECTOR & CAP. WISE MOST ACTIVE STOCK [V/TPS]

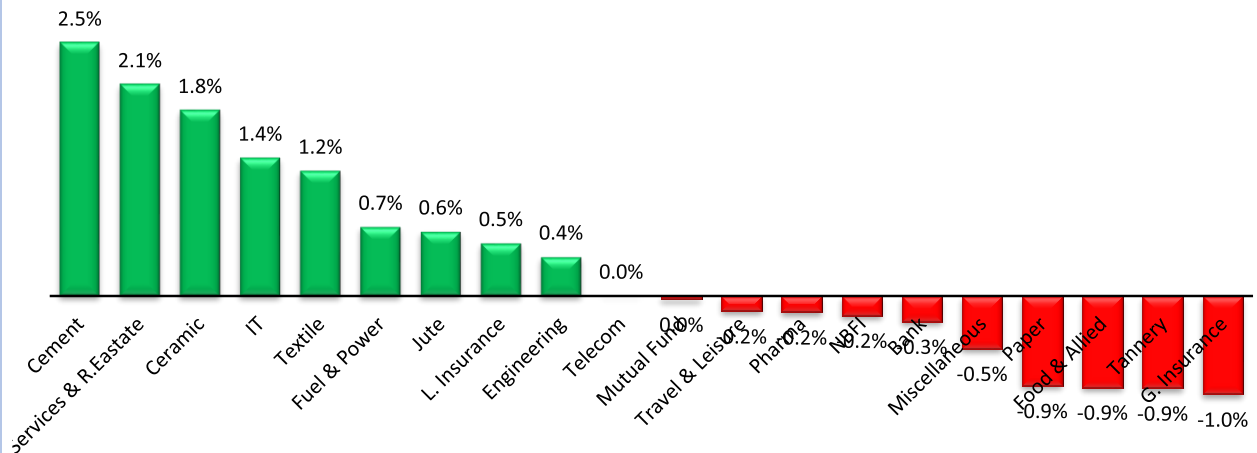
| BANK | | | | | | | TEXTILE | | | | | | |
|--|------------|----------|---------|-------|-------|-------|-------------------------------------|------------|----------|---------|-------|-------|-------|
| SI | INSTRUMENT | PRICE | VOLUME | VALUE | V/TPS | % | SI | INSTRUMENT | PRICE | VOLUME | VALUE | V/TPS | % |
| 1 | BRACBANK | 48.7 N | 2132858 | 10.52 | 3.0% | -4.5% | 1 | QUEENSOUTH | 23.5 Y | 4292880 | 9.8 | 16.4% | 8.3% |
| 2 | UNIONBANK | 12.0 N | 5753700 | 6.84 | 1.6% | 1.7% | 2 | APEXSPINN | 146.7 N | 175759 | 2.6 | 9.4% | -0.5% |
| 3 | IFIC | 14.8 N | 5298124 | 7.72 | 0.8% | 1.4% | 3 | PDL | 12.4 N | 4326907 | 5.3 | 4.3% | 4.2% |
| 4 | SBACBANK | 12.7 N | 892751 | 1.12 | 0.7% | 0.0% | 4 | TOSRIFA | 17.4 N | 759206 | 1.3 | 4.1% | -0.6% |
| 5 | ONEBANKLTD | 12.3 N | 3200674 | 3.92 | 0.7% | 0.8% | 5 | HFL | 19.6 N | 837169 | 1.6 | 3.5% | 3.2% |
| FINANCE | | | | | | | INSURANCE | | | | | | |
| SI | INSTRUMENT | PRICE | VOLUME | VALUE | V/TPS | % | SI | INSTRUMENT | PRICE | VOLUME | VALUE | V/TPS | % |
| 1 | BAYLEASING | 27.4 Y | 1473858 | 3.93 | 2.6% | 5.0% | 1 | ASIAINS | 74.3 N | 738042 | 5.4 | 6.1% | -1.5% |
| 2 | NHFIL | 44.8 N | 586544 | 2.58 | 1.9% | 3.9% | 2 | UNIONINS | 44.5 N | 803241 | 3.6 | 3.7% | -0.4% |
| 3 | GSPFINANCE | 24.9 N | 1464743 | 3.53 | 1.7% | 2.9% | 3 | FAREASTLIF | 92.5 N | 652604 | 6.0 | 2.9% | 1.5% |
| 4 | ICB | 102.0 N | 188977 | 1.94 | 1.7% | -0.7% | 4 | SUNLIFEINS | 39.3 N | 271617 | 1.0 | 2.2% | 9.8% |
| 5 | LANKABAFIN | 31.9 N | 2734913 | 8.52 | 1.2% | 0.9% | 5 | EASTERNINS | 74.3 N | 270765 | 2.0 | 1.8% | -0.7% |
| POWER | | | | | | | PHARMA | | | | | | |
| SI | INSTRUMENT | PRICE | VOLUME | VALUE | V/TPS | % | SI | INSTRUMENT | PRICE | VOLUME | VALUE | V/TPS | % |
| 1 | EASTRN LUB | 2142.2 N | 4884 | 1.04 | 2.0% | -1.2% | 1 | PHARMAID | 809.6 N | 61742 | 5.0 | 3.0% | 0.3% |
| 2 | DOREENPWR | 69.6 N | 314224 | 2.15 | 1.4% | 2.2% | 2 | FARCHEM | 12.2 N | 2867416 | 3.5 | 2.3% | -1.6% |
| 3 | CVOPRL | 179.1 N | 143127 | 2.52 | 1.4% | -0.6% | 3 | ORIONINFU | 83.1 N | 213011 | 1.7 | 2.0% | 3.4% |
| 4 | LINDEBD | 1602.3 N | 23421 | 3.75 | 1.3% | 0.5% | 4 | KEYACOSMET | 7.6 N | 9491119 | 7.2 | 1.9% | 1.3% |
| 5 | GBBPOWER | 34.2 N | 572517 | 1.94 | 1.2% | 1.5% | 5 | AFCAGRO | 23.3 N | 619069 | 1.4 | 1.6% | 1.7% |
| ENGINEERING | | | | | | | FOOD | | | | | | |
| SI | INSTRUMENT | PRICE | VOLUME | VALUE | V/TPS | % | SI | INSTRUMENT | PRICE | VOLUME | VALUE | V/TPS | % |
| 1 | YPL | 23.3 N | 2565942 | 5.95 | 6.3% | 1.7% | 1 | BEACHHATCH | 35.3 N | 342125 | 1.2 | 8.6% | 0.0% |
| 2 | BBS | 22.5 Y | 2852368 | 6.34 | 5.4% | 3.7% | 2 | GEMINISEA | 359.9 N | 110866 | 4.0 | 4.0% | -1.7% |
| 3 | BDLAMP | 292.7 N | 123226 | 3.59 | 4.0% | -0.8% | 3 | LOVELLO | 35.8 Y | 1071736 | 3.7 | 3.7% | 6.2% |
| 4 | NAHEEACP | 55.8 Y | 928531 | 5.12 | 2.9% | 3.1% | 4 | MEGHNA PET | 27.0 Y | 195272 | 0.5 | 3.3% | 3.1% |
| 5 | BDAUTOCA | 140.3 N | 53356 | 0.74 | 2.2% | 1.1% | 5 | APEXFOODS | 189.7 N | 70643 | 1.3 | 2.3% | 1.0% |
| MISCELLANEOUS | | | | | | | IT | | | | | | |
| SI | INSTRUMENT | PRICE | VOLUME | VALUE | V/TPS | % | SI | INSTRUMENT | PRICE | VOLUME | VALUE | V/TPS | % |
| 1 | BSC | 108.0 N | 2083163 | 22.27 | 5.8% | 0.8% | 1 | AAMRATECH | 34.8 Y | 2074284 | 7.1 | 10.9% | 3.6% |
| 2 | BERGERPBL | 1660.5 N | 16004 | 2.66 | 3.0% | -2.9% | 2 | AGNISYSL | 24.9 Y | 4715981 | 11.6 | 10.2% | 6.0% |
| 3 | AMANFEED | 42.9 N | 824473 | 3.45 | 2.4% | 2.4% | 3 | BDCOM | 28.4 Y | 2019299 | 5.7 | 7.0% | 9.7% |
| MUTUAL FUND | | | | | | | CEMENT | | | | | | |
| SI | INSTRUMENT | PRICE | VOLUME | VALUE | V/TPS | % | SI | INSTRUMENT | PRICE | VOLUME | VALUE | V/TPS | % |
| 1 | 1STPRIMFMF | 17.6 N | 598325 | 1.06 | 3.6% | -1.7% | 1 | ARAMITCEM | 33.4 N | 512291 | 1.7 | 3.8% | -4.6% |
| 2 | CAPMIBLMF | 14.2 N | 385237 | 0.54 | 1.9% | 0.7% | 2 | LHBL | 64.1 N | 2050110 | 12.7 | 0.9% | 3.4% |
| 3 | CAPMBDBLMF | 9.3 N | 493125 | 0.46 | 1.9% | -2.1% | 3 | CONFIDCEM | 108.5 N | 164422 | 1.7 | 0.6% | 1.6% |
| VOLUME BASED ON PUBLIC HOLDING RANK | | | | | | | VOLUME BASED ON PUBLIC HOLDING RANK | | | | | | |
| MICRO CAP. | | | | | | | MID CAP. | | | | | | |
| SI | INSTRUMENT | PRICE | VOLUME | VALUE | V/TPS | % | SI | INSTRUMENT | PRICE | VOLUME | VALUE | V/TPS | % |
| 1 | YPL | 23.3 N | 2565942 | 5.95 | 9.4% | 1.7% | 1 | BBS | 22.5 Y | 2852368 | 6.3 | 5.4% | 3.7% |
| 2 | BEACHHATCH | 35.3 N | 342125 | 1.19 | 7.0% | 0.0% | 2 | ADNTEL | 64.2 N | 755686 | 4.7 | 4.6% | 5.1% |
| 3 | GEMINISEA | 359.9 N | 110866 | 3.96 | 4.3% | -1.7% | 3 | NAHEEACP | 55.8 N | 928531 | 5.1 | 2.9% | 3.1% |
| 4 | ARAMITCEM | 33.4 N | 512291 | 1.70 | 3.8% | -4.6% | 4 | AMANFEED | 42.9 N | 824473 | 3.4 | 2.4% | 2.4% |
| 5 | ISNLTD | 42.7 N | 161130 | 0.68 | 3.3% | 4.6% | 5 | KEYACOSMET | 7.6 N | 9491119 | 7.2 | 1.9% | 1.3% |
| SMALL CAP. | | | | | | | LARGE CAP. | | | | | | |
| SI | INSTRUMENT | PRICE | VOLUME | VALUE | V/TPS | % | SI | INSTRUMENT | PRICE | VOLUME | VALUE | V/TPS | % |
| 1 | AAMRATECH | 34.8 Y | 2074284 | 7.1 | 10.9% | 3.6% | 1 | BSC | 108.0 N | 2083163 | 22.3 | 5.8% | 0.8% |
| 2 | AGNISYSL | 24.9 Y | 4715981 | 11.6 | 10.2% | 6.0% | 2 | BERGERPBL | 1660.5 N | 16004 | 2.7 | 3.0% | -2.9% |
| 3 | BDCOM | 28.4 Y | 2019299 | 5.7 | 7.0% | 9.7% | 3 | OLYMPIC | 137.1 N | 549658 | 7.7 | 1.8% | -2.1% |
| 4 | BDLAMP | 292.7 N | 123226 | 3.6 | 4.0% | -0.8% | 4 | SAIFPOWER | 38.2 N | 2347925 | 8.8 | 1.7% | 2.7% |
| 5 | LOVELLO | 35.8 N | 1071736 | 3.7 | 3.7% | 6.2% | 5 | RAKCERAMIC | 44.0 N | 738668 | 3.2 | 1.5% | 2.8% |
| ▲ FIND NEW UPTREND SHARE OR BREAKOUT SHARE | | | | | | | AVOID OVER PRICED SHARE | | | | | | |

| SECTOR LEADER BY TURNOVER | | | | | | | | | | | |
|--|-------|-------|---------|-------|-------|---------------|-------|-------|---------|-------|-------|
| BANK | | | | | | TEXTILE | | | | | |
| SL INSTRUMEN' | PRICE | VALUE | VOLUME | V/TPS | % | SL INSTRUMEN' | PRICE | VALUE | VOLUME | V/TPS | % |
| 1 BRACBANK | 48.7 | 10.5 | 2132858 | 3.0% | -4.5% | 1 QUEENSOUT | 23.5 | 9.8 | 4292880 | 16.4% | 8.3% |
| 2 IFIC | 14.8 | 7.7 | 5298124 | 0.8% | 1.4% | 2 TAMIJTEX | 292 | 8.1 | 270337 | 2.3% | -1.9% |
| 3 UNIONBANK | 12.0 | 6.8 | 5753700 | 1.6% | 1.7% | 3 DSSL | 18.6 | 6.5 | 3602005 | 3.3% | 5.7% |
| 4 NBL | 7.5 | 4.5 | 5961928 | 0.4% | 0.0% | 4 PDL | 12.4 | 5.3 | 4326907 | 4.3% | 4.2% |
| FINANCE | | | | | | INSURANCE | | | | | |
| 1 LANKABAFIN | 31.9 | 8.5 | 2734913 | 1.2% | 0.9% | 1 FAREASTLIF | 92.5 | 6.0 | 652604 | 2.9% | 1.5% |
| 2 BAYLEASING | 27.4 | 3.9 | 1473858 | 2.6% | 5.0% | 2 DELTALIFE | 143 | 6.0 | 418707 | 0.7% | 2.8% |
| 3 BDFINANCE | 41.1 | 3.8 | 916059 | 1.0% | -5.7% | 3 ASIAINS | 74.3 | 5.4 | 738042 | 6.1% | -1.5% |
| 4 GSPFINANCE | 24.9 | 3.5 | 1464743 | 1.7% | 2.9% | 4 UNIONINS | 44.5 | 3.6 | 803241 | 3.7% | -0.4% |
| POWER | | | | | | PHARMA | | | | | |
| 1 POWERGRID | 59.8 | 4.1 | 707679 | 1.0% | 3.3% | 1 BEACONPHA | 222 | 21.4 | 963697 | 1.2% | 1.2% |
| 2 LINDEBD | 1602 | 3.7 | 23421 | 1.3% | 0.5% | 2 SQURPHARV | 211 | 20.7 | 981736 | 0.3% | -0.7% |
| 3 CVOPRL | 179.1 | 2.5 | 143127 | 1.4% | -0.6% | 3 ORIONPHARI | 95.6 | 11.8 | 1253831 | 1.4% | 2.6% |
| 4 DOREENPWR | 69.6 | 2.1 | 314224 | 1.4% | 2.2% | 4 BXPHARMA | 178 | 9.3 | 536302 | 0.6% | 0.7% |
| ENGINEERING | | | | | | FOOD | | | | | |
| 1 GPHISPAT | 50.7 | 6.5 | 1302399 | 0.9% | 4.7% | 1 BATBC | 567 | 18.6 | 330911 | 1.0% | -1.2% |
| 2 BBS | 22.5 | 6.3 | 2852368 | 5.4% | 3.7% | 2 OLYMPIC | 137 | 7.7 | 549658 | 1.8% | -2.1% |
| 3 YPL | 23.3 | 6.0 | 2565942 | 6.3% | 1.7% | 3 RAHIMAFOO | 306 | 4.7 | 155317 | 0.0% | -0.5% |
| 4 NAHEEACP | 55.8 | 5.1 | 928531 | 2.9% | 3.1% | 4 GEMINISEA | 360 | 4.0 | 110866 | 4.0% | -1.7% |
| MISCELLANEOUS | | | | | | IT | | | | | |
| 1 BEXIMCO | 148 | 59.6 | 4046915 | 1.2% | 0.5% | 1 AGNISYSL | 24.9 | 11.6 | 4715981 | 10.9% | 6.0% |
| 2 BSC | 108 | 22.3 | 2083163 | 5.8% | 0.8% | 2 AAMRATECH | 34.8 | 7.1 | 2074284 | 10.2% | 3.6% |
| 3 AMANFEED | 42.9 | 3.4 | 824473 | 2.4% | 2.4% | 3 BDCOM | 28.4 | 5.7 | 2019299 | 7.0% | 9.7% |
| 4 BERGERPBL | 1661 | 2.7 | 16004 | 3.0% | -2.9% | 4 ADNTEL | 64.2 | 4.7 | 755686 | 4.6% | 5.1% |
| MUTUAL FUND | | | | | | CEMENT | | | | | |
| 1 TRUSTB1MF | 5.5 | 1.4 | 2516758 | 1.3% | 0.0% | 1 LHBL | 64.1 | 23.8 | 2050110 | 3.8% | 3.4% |
| 2 FBFIF | 5.2 | 1.2 | 2293628 | 1.1% | 2.0% | 2 CONFIDCEM | 109 | 6.2 | 164422 | 0.9% | 1.6% |
| MARKET CAP. & CORRELATION WISE TURNOVER LEADER | | | | | | | | | | | |
| MICRO CAP. | | | | | | MID CAP. | | | | | |
| 1 YPL | 23.3 | 5.95 | 2565942 | 9.4% | 1.7% | 1 KEYACOSME' | 7.6 | 7.2 | 9491119 | 2% | 1.3% |
| 2 GEMINISEA | 359.9 | 3.96 | 110866 | 4.3% | -1.7% | 2 BBS | 22.5 | 6.3 | 2852368 | 5% | 3.7% |
| 3 ARAMITCEM | 33.4 | 1.70 | 512291 | 3.8% | -4.6% | 3 NAHEEACP | 55.8 | 5.1 | 928531 | 3% | 3.1% |
| 4 SHURWID | 18.8 | 1.44 | 763740 | 2.1% | 1.1% | 4 ADNTEL | 64.2 | 4.7 | 755686 | 5% | 5.1% |
| 5 AL-HAJTEX | 91.6 | 1.43 | 160053 | 1.4% | 3.3% | 5 SALVOCHEM | 54 | 3.6 | 669378 | 1% | 1.3% |
| SMALL CAP. | | | | | | LARGE CAP. | | | | | |
| 1 AGNISYSL | 24.9 | 11.6 | 4715981 | 10.2% | 6.0% | 1 BEXIMCO | 148 | 59.6 | 4046915 | 1.2% | 0.5% |
| 2 SONALIPAPR | 722.3 | 8.8 | 121113 | 2.0% | -3.1% | 2 BSC | 108 | 22.3 | 2083163 | 5.8% | 0.8% |
| 3 AAMRATECH | 34.8 | 7.1 | 2074284 | 10.9% | 3.6% | 3 BEACONPHA | 222 | 21.4 | 963697 | 1.2% | 1.2% |
| 4 BDCOM | 28.4 | 5.7 | 2019299 | 7.0% | 9.7% | 4 SQURPHARV | 211 | 20.7 | 981736 | 0.3% | -0.7% |
| 5 PHARMAID | 809.6 | 5.0 | 61742 | 3.0% | 0.3% | 5 BATBC | 567 | 18.6 | 330911 | 1.0% | -1.2% |
| LOW PAID-UP & Z-CATEGORY LEADER | | | | | | | | | | | |
| LOW PAID-UP | | | | | | Z CATEGORY | | | | | |
| 1 SONALIPAPR | 722.3 | 8.84 | 121113 | 2.0% | -3.1% | 1 CNATEX | 10.2 | 2.6 | 2540525 | 1.7% | 3.0% |
| 2 TAMIJTEX | 292.3 | 8.08 | 270337 | 2.3% | -1.9% | 2 ARAMITCEM | 33.4 | 1.7 | 512291 | 3.8% | -4.6% |
| 3 PHARMAID | 809.6 | 4.99 | 61742 | 3.0% | 0.3% | 3 ALLTEX | 24.5 | 1.3 | 541411 | 2.2% | 1.2% |
| 4 RAHIMAFOO | 305.5 | 4.73 | 155317 | 2.0% | -0.5% | 4 BEACHHATCHI | 35.3 | 1.2 | 342125 | 8.6% | 0.0% |
| 5 ANWARGALV | 359.8 | 4.69 | 129494 | 2.0% | -1.6% | 5 SUNLIFEINS | 39.3 | 1.0 | 271617 | 2.2% | 9.8% |
| 6 GEMINISEA | 359.9 | 3.96 | 110866 | 4.0% | -1.7% | 6 GENNEXT | 6.6 | 0.9 | 1361971 | 0.4% | 3.1% |

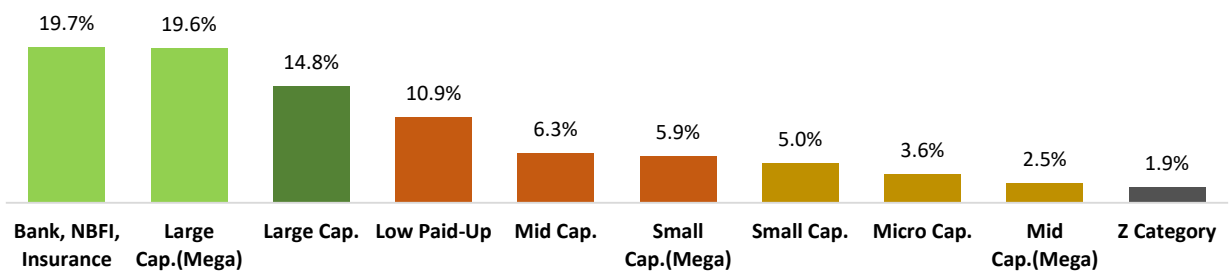
SECTOR TURNOVER %



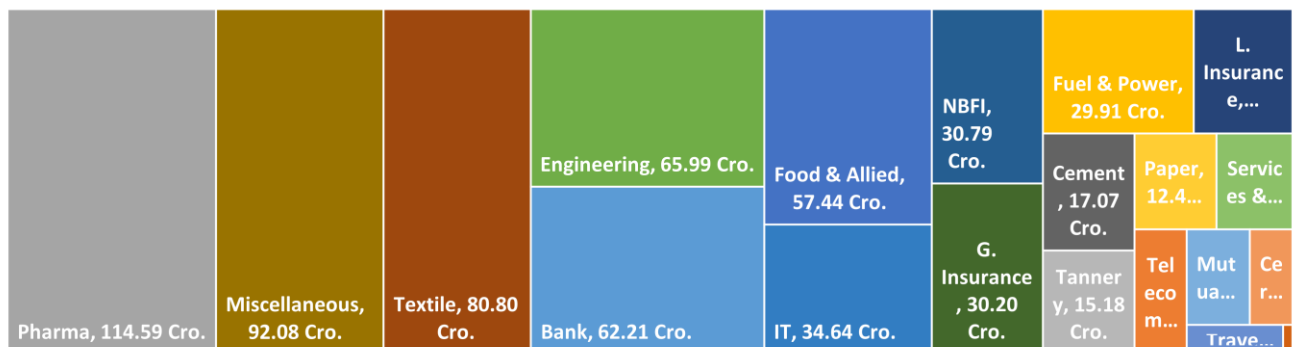
SECTOR RETURN



MARKET CAP. WISE TURNOVER



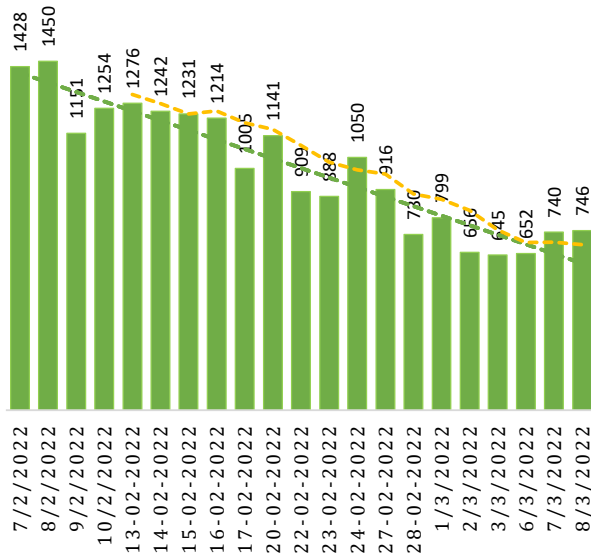
SECTOR TURNOVER VALUE



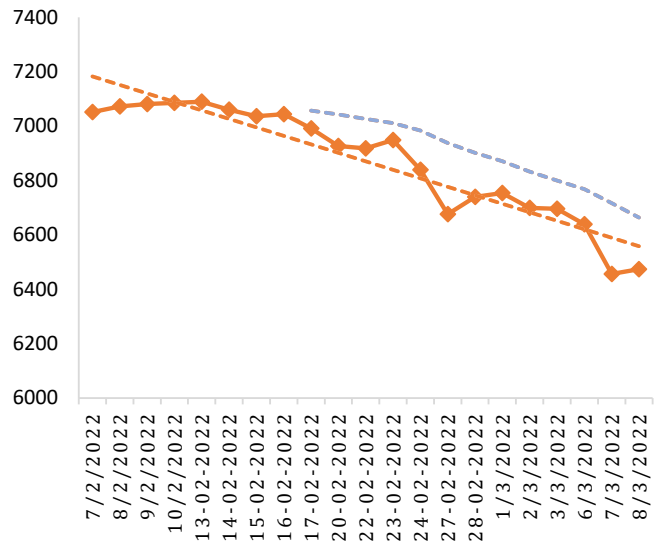
MARKET CHART

DSEX Index Uptrend

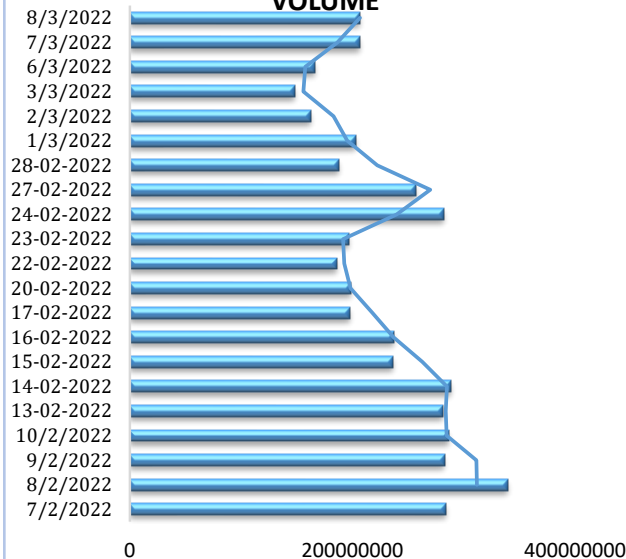
TURNOVER (MN)



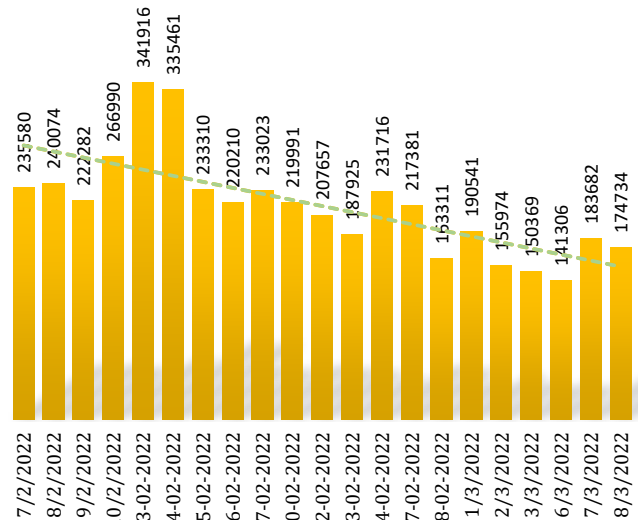
DSEX CHART



VOLUME



TRADE



Capital Market Research Department

Mohammad Younus Ali
Shah Md. Aman Ullah

Chief Operating Officer
Research Analyst

younus3009@gmail.com
aman_dsr@yahoo.com
aman@mikasecurities.net
Mob. No: '01937952676

Disclaimer

We, the team of Research Analyst and author, hereby certify that all of the views expressed in this report accurately reflect our views about the subject, which is based on publicly available data and information. But we do not guarantee that such information is accurate or complete. Any opinions expressed in this report are subject to change without prior notice.

This Document/Report/Recommendations is published by MSL for private circulation and only for information purpose and MSL do not solicit any trading or investment advice via this report/document. The securities and strategies discussed and opinions expressed in this report may not be suitable for all investors.