

DSE MARKET SUMMARY						Wednesday, March 30, 2022		
Sl. Sector	Market Cap.	V%	A/D	Weight	Pre.Weight	Weight %		
Item	#	BDT	V/TPS	Ratio	TO W%	30.03.2022	29.03.2022	Change
1 Bank	33	71665 Cro.	0.21%	0.2	6.0%	13.27%	13.34%	-0.50%
2 Pharma	32	72521 Cro.	0.75%	0.3	8.8%	13.43%	13.43%	-0.03%
3 Telecom	3	65614 Cro.	0.13%	0.5	0.6%	12.15%	12.17%	-0.14%
4 Engineering	42	55412 Cro.	0.75%	0.4	11.2%	10.26%	10.33%	-0.65%
5 Fuel & Power	23	48145 Cro.	0.40%	0.5	3.2%	8.91%	8.94%	-0.30%
6 Food & Allied	21	41601 Cro.	1.65%	0.2	4.8%	7.70%	7.73%	-0.38%
7 Miscellaneous	14	25457 Cro.	0.56%	0.1	4.9%	4.71%	4.73%	-0.41%
8 NBFI	23	19777 Cro.	0.57%	0.6	3.0%	3.66%	3.66%	0.13%
9 Textile	58	17548 Cro.	0.67%	0.4	8.3%	3.25%	3.27%	-0.60%
10 Cement	7	13185 Cro.	0.63%	0.8	2.1%	2.44%	2.46%	-0.78%
11 G. Insurance	40	11984 Cro.	1.55%	100.0	13.0%	2.22%	2.14%	3.47%
L. Insurance	13	7432 Cro.	1.22%	5.0	3.9%	1.38%	1.37%	0.22%
12 Mutual Fund	36	4030 Cro.	0.59%	1.3	1.5%	0.75%	0.75%	0.15%
13 IT	11	3966 Cro.	4.41%	0.0	9.6%	0.73%	0.74%	-1.19%
14 Tannery	6	4240 Cro.	5.77%	0.5	11.7%	0.79%	0.77%	1.92%
15 Paper	6	3642 Cro.	0.00%	0.2	2.7%	0.67%	0.68%	-0.27%
16 Ceramic	5	3055 Cro.	0.58%	0.0	0.7%	0.57%	0.57%	-1.11%
17 Services & R.Eastate	4	2729 Cro.	0.72%	0.0	1.1%	0.51%	0.51%	-1.40%
18 Travel & Leisure	4	2786 Cro.	1.43%	2.0	1.2%	0.52%	0.52%	-0.02%
19 Jute	3	212 Cro.	1.24%	2.0	0.2%	0.04%	0.04%	0.07%
Large Cap.(Mega)	13	225629 Cro.	0.31%	0.2	7.7%	41.78%	41.86%	-0.21%
Large Cap.	35	75285 Cro.	1.03%	0.9	23.4%	13.94%	14.00%	-0.40%
Mid Cap.(Mega)	20	11521 Cro.	0.68%	0.0	1.3%	2.13%	2.15%	-0.82%
Mid Cap.	34	7934 Cro.	0.82%	0.2	6.5%	1.47%	1.47%	-0.36%
Small Cap.(Mega)	30	12876 Cro.	1.55%	0.2	9.7%	2.38%	2.40%	-0.59%
Small Cap.	21	4651 Cro.	0.69%	0.1	4.9%	0.86%	0.87%	-0.83%
Micro Cap.	37	3449 Cro.	0.95%	0.3	3.3%	0.64%	0.64%	-0.57%
Z Category	27	3366 Cro.	0.25%	0.0	1.2%	0.62%	0.62%	-0.27%
Bank, NBFI, Insurance	109	116537 Cro.	0.89%	1.9	26.0%	21.58%	21.59%	-0.04%
Low Paid-Up	55	17844 Cro.	1.55%	0.0	14.1%	3.30%	3.32%	-0.59%
MNC Stock	13	132503 Cro.	0.59%	0.9	3.8%	24.58%	24.59%	-0.01%
Govt. Stock	15	22932 Cro.	0.60%	0.4	2.1%	4.25%	4.29%	-0.75%
Bond & Debenture	238	63100 Cro.				12.05%	11.86%	DSEX Index
Equity Market	384	471886 Cro.				87.95%	88.14%	-11.54
DSEX Index Point				↑	-11.54	6753.76	6765.30	-0.17%
DS30 Index Point				↑	-5.48	2465.60	2471.08	-0.22%
DSES Index Point				↓	-1.05	1463.93	1464.98	-0.07%
Total	622		Market Cap. >			539017 Cro.	540097 Cro.	-1080 Cro.
A/D Ratio	0.5		TRADE SUMMARY					Change
Issue Advanced	109	Trades				146151	161199	-9.34%
Issue Declined	205	Volume				167122052	218887224	-23.65%
Issue Unchanged	65	Total Value (BDT)				801.33 Cro.	981.62 Cro.	-18.37%
Total Issue Traded	379	Block & Bond trade		8.8%		70.15 Cro.	42.49 Cro.	65.10%
MARKET TREND SUMMARY								
Statement -1:	Insurance, Tannery & Engineering Sector hold top position by turnover.							
Statement -2:	Bank+NBFI+Insurance, Large Cap. & Low Paid-up share topped by Market Cap.							
Statement -3:	NBFI, Ceramic & Jute sector shows positive performance today.							
Statement -4:	Next Index Resistance level 6809 points & Support level 6610 points.							
DSEX Index >	Down Trend	MACD Divergence	16.54	Market P/E	15.63			
DSEX Index >	Index Below MA(3)	Index Below MA(9)	Index Above MA(21)					
PREPARED BY: SHAH MD. AMAN ULLAH								

SECTOR TURNOVER HEAT MAP

Sector	Avg	Warning!! Leading sector trend expected to chnage								YTD (R) %
	Rank	Date		⇒						
Pharma	3.0	2	2	2	2	2	6	5	3.5%	
Miscellaneous	3.3	1	1	1	1	4	7	8	2.5%	
Engineering	4.1	5	7	7	3	3	1	3	-3.3%	
Textile	4.3	3	3	6	5	5	2	6	9.6%	
IT	4.9	4	4	10	8	1	3	4	-1.1%	
Insurance	5.6	9	5	4	6	6	8	1	-10.0%	
Bank	5.7	6	6	3	7	7	4	7	-1.3%	
Tannery	7.3	12	11	5	4	8	9	2	24.2%	
Food & Allied	8.9	7	8	9	9	10	10	9	-6.8%	
Fuel & Power	9.7	8	10	8	10	11	11	10	2.3%	
Paper	10.0	10	9	11	11	12	5	12	6.8%	
NBFI	12.0	11	13	12	12	13	12	11	-7.3%	
Cement	13.1	16	14	13	14	9	13	13	3.3%	
Services & R.Eas	14.0	13	12	14	15	14	14	16	6.7%	
Mutual Fund	15.0	14	17	17	13	15	15	14	0.1%	
Telecom	16.3	15	15	15	17	16	18	18	-4.9%	
Ceramic	16.6	18	16	16	16	17	16	17	-0.4%	
Travel & Leisure	17.3	17	18	18	18	18	17	15	11.2%	
Jute	19.0	19	19	19	19	19	19	19	2.9%	

MARKET CAP. HEAT MAP

Market cap. Avg Rank	Warning!! Leading Market Cap trend expected to change								YTD (R) %
Bank, NBFI, Insu	1.9	2	2	1	2	3	2	1	-2.1%
Large Cap.	2.3	4	4	2	1	2	1	2	3.1%
Low Paid-Up	3.0	3	3	4	4	1	3	3	6.5%
Large Cap.(Mega	3.1	1	1	3	3	4	5	5	-2.3%
Small Cap.(Mega	4.9	5	5	5	6	5	4	4	6.9%
Mid Cap.	6.3	6	6	6	7	7	6	6	11.2%
Small Cap.	6.7	7	7	8	5	6	7	7	13.2%
Micro Cap.	7.9	8	8	7	8	8	8	8	11.9%
Mid Cap.(Mega)	9.4	9	10	9	10	10	9	9	1.3%
Z Category	9.6	10	9	10	9	9	10	10	5.5%

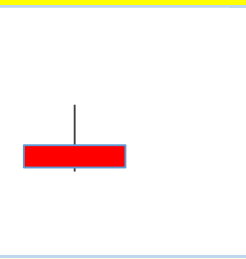
DSEX TECHNICAL INDICATOR

TODAY DSEX	6753.76	
INDEX MA(3)	6759.53	Index Below MA(3)
INDEX MA(9)	6756.25	Index Below MA(9)
INDEX MA(21)	6700.44	Index Above MA(21)
MACD POINT	-Up-	-23.87
SIGNAL POINT	Trend	-40.41

NEW 52 WEEK HIGH/LOW

SECURITIES HITTING THE	
HIGH	LOW
52 WEEK-	1 1

DSEX CANDLE



TODAY DSEX	OPEN	HIGH	LOW	CLOSE
	6765	6785	6752	6754

Yearly Higher Price Check List

Macro Economy				SL	INSTRUMEN	%	Price	P.HIGH	EPS:Q-Q(G)	Y-Y(G)	
Last Update: 28-Feb-22					1	NAHEEACP	3.1%	70.2	68.4	10%	-1%
Indicator	Recent (M)	Previous (M)	%		2	FORTUNE	4.1%	140.7	141.0	-19%	220%
Inflation Rate	6.17%	5.86%	5.3%		3	BDLAMPS	0.4%	355.4	358.8	74%	100%
GDP to Market Cap.	15.45%				4	ISLAMIBAN	-0.6%	32.6	33.1		64%
Avg I% Rate	4.01%	3.99%	0.5%		5	CNATEX	-1.8%	11.1	11.3		
\$ 1 USD - BDT	85.84	85.77	0.1%		6	AL-HAJTEX	-0.8%	105.2	107.5	100%	-33%
Call Money Rate	1.65%	2.80%	-40.9%								
FX Reserve (\$ bn.)	45.95	44.95	2.2%								
Export Growth(Y-Y)	30.30%										
Import Growth(Y-Y)	46.20%										

Yearly Lower Price Check List

SL	INSTRUMEN	%	Price	P.LOW	EPS:Q-Q(G)	Y-Y(G)
1	DBH	-0.6%	65.5	65.9		43%
2	ROBI	-0.6%	33.8	33.8		

SECTOR GAINER HEAT MAP

Sum of >	Return	Date →					30	YTD (R)%
Tannery	7.7%	2.1%	1.3%	3.0%	-0.6%	1.9%	24.2%	
G. Insurance	5.2%	0.2%	-0.7%	1.7%	0.5%	3.5%	-12.2%	
Cement	5.0%	0.9%	-0.1%	4.9%	0.1%	-0.8%	3.3%	
Paper	4.7%	0.7%	2.3%	2.5%	-0.5%	-0.3%	6.8%	
Jute	2.5%	-1.1%	1.9%	-0.3%	1.9%	0.1%	2.9%	
Fuel & Power	1.3%	0.4%	-0.3%	0.9%	0.6%	-0.3%	2.3%	
Travel & Leisur	1.2%	-0.8%	-0.3%	0.9%	1.4%	0.0%	11.2%	
Ceramic	0.7%	-1.0%	-1.0%	1.7%	2.1%	-1.1%	-0.4%	
Mutual Fund	0.7%	0.0%	-0.4%	-0.2%	1.2%	0.2%	0.1%	
Telecom	0.4%	-0.3%	0.7%	0.4%	-0.2%	-0.1%	-4.9%	
Engineering	0.4%	0.1%	0.4%	-0.1%	0.6%	-0.7%	-3.3%	
L. Insurance	-0.5%	1.5%	-1.5%	-0.9%	0.2%	0.2%	-3.6%	
Pharma	-0.5%	-0.3%	-0.1%	0.0%	-0.2%	0.0%	3.5%	
Textile	-0.6%	-0.3%	-0.7%	0.5%	0.5%	-0.6%	9.6%	
NBFI	-0.8%	-0.5%	-1.0%	-1.1%	1.6%	0.1%	-7.3%	
Services & R.Ea	-1.0%	-0.6%	-1.3%	0.8%	1.5%	-1.4%	6.7%	
Bank	-1.1%	0.2%	-0.1%	-0.2%	-0.6%	-0.5%	-1.3%	
Food & Allied	-1.3%	-0.5%	0.0%	-0.2%	-0.3%	-0.4%	-6.8%	
IT	-2.3%	-1.4%	-0.6%	2.0%	-1.1%	-1.2%	-1.1%	
Miscellaneous	-2.3%	-0.6%	-0.3%	-0.9%	-0.2%	-0.4%	2.5%	

MARKET CAP. GAINER HEAT MAP

Sum of >	Return	Date →					30	YTD(R)%
Small Cap.(Me	1.9%	0.2%	1.2%	1.7%	-0.5%	-0.6%	6.9%	
Govt. Stock	1.7%	-0.3%	-0.5%	1.3%	2.0%	-0.9%	4.4%	
Low Paid-Up	1.6%	0.3%	0.9%	1.7%	-0.7%	-0.6%	6.5%	
Large Cap.	1.6%	0.2%	-0.1%	1.0%	0.9%	-0.4%	3.1%	
Micro Cap.	1.1%	0.5%	1.1%	0.6%	-0.5%	-0.6%	11.9%	
MNC Stock	0.3%	-0.3%	0.3%	0.7%	-0.3%	-0.2%	-5.3%	
Z Category	0.1%	-0.1%	-0.4%	0.7%	0.2%	-0.3%	5.5%	
Mid Cap.	-0.1%	-0.1%	-0.6%	0.6%	0.4%	-0.4%	11.2%	
Small Cap.	-0.1%	0.0%	-0.1%	0.3%	0.4%	-0.8%	13.2%	
Large Cap.(Me	-0.3%	-0.3%	0.2%	0.2%	-0.2%	-0.2%	-2.3%	
Bank, NBFI, Ins	-0.7%	0.1%	-0.3%	-0.2%	-0.4%	0.0%	-2.1%	
Mid Cap.(Mega	-1.0%	0.0%	-0.8%	-0.1%	0.7%	-0.8%	1.3%	

ADVANCE-DECLINE RATIO & INDEX

A/D Ratio Heat Map	0.84	0.53	1.15	1.2	0.53
DSEX Index % Change	0.0%	-0.2%	0.2%	0.1%	-0.2%

TOP SHARE BY MARKET CAPITALIZATION

INSTRUMENT	% (+/-)	PRICE	E.P.S	W%	BDT (Cro.)	DDM(V)	P/E	5Y Avg P/E	Q-Q(G)	Y-Y(G)	5Y Avg (G)
GP	0.1%	328.7	25.28	8.2%	44384.36		13.0	15.6	-4.7%		14.0%
WALTONHIL	-0.8%	1078.5	29.46	6.0%	32670.82		36.6		-20.6%	-31.4%	65.7%
BATBC	-0.4%	580.7	27.72	5.8%	31357.80	845	20.9	22.4	-2.9%	37.5%	15.7%
SQURPHARMA	-0.3%	218.1	21.76	3.6%	19333.50	330	10.0	16.4	-3.5%	24.2%	15.3%
ROBI	-0.6%	33.8	0.43	3.3%	17704.21		79.2				217.5%
RENATA	0.1%	1342.1	51.24	2.7%	14386.37	1503	26.2	24.2	-9.7%	14.4%	17.7%
UPGDCL	-0.2%	252.0	23.68	2.7%	14608.32		10.6	19.5	18.4%	24.6%	-8.4%
BEXIMCO	-0.5%	152.6	17.34	2.5%	13372.63	48	8.8	19.8	5.5%	351.6%	-2.7%
ICB	0.2%	105.3	3.48	1.6%	8485.24		30.3				-3.0%
BXPBARMA	-0.3%	176.8	14.24	1.5%	7887.26	178	12.4	14.4	8.5%	43.8%	18.2%
BERGERPBL	-0.1%	1760.7	57.57	1.5%	8165.75	1844	30.6	26.0	12.2%	19.8%	16.6%
LHBL	-1.2%	75.5	3.34	1.6%	8768.37		22.6		-5.9%		13.0%
MARICO	0.1%	2350.4	120.11	1.4%	7403.76	2403	19.6	20.9	-4.3%	13.5%	13.6%

Sector Summary		Trade			Volume			Turnover			T.O
Sector	P/E	Today	Last day	%	Today	Last Day	%	Today	Last Day	%	W%
Bank	7.6	8507	12367	-31%	23269899	39818830	-42%	44.20	79.08	-44%	6.0%
Telecom	17.1	1170	1799	-35%	634141	703888	-10%	4.09	7.68	-47%	0.6%
Pharma	16.8	9456	10876	-13%	14739454	18147362	-19%	64.28	74.65	-14%	8.8%
Fuel & Powe	13.7	6205	9505	-35%	4243528	9922795	-57%	23.51	46.54	-49%	3.2%
Food & Allie	29.2	9867	14048	-30%	6614620	11715177	-44%	34.89	53.00	-34%	4.8%
Engineering	17.1	17081	21154	-19%	13702842	19284142	-29%	81.88	103.44	-21%	11.2%
NBFI	24.4	4969	5045	-2%	8211175	11588549	-29%	22.18	33.28	-33%	3.0%
Textile	22.1	14285	22645	-37%	23123980	42355110	-45%	60.63	97.45	-38%	8.3%
Cement	31.4	3529	4277	-17%	2064077	3457872	-40%	15.10	25.90	-42%	2.1%
Miscellaneous	6.2	6119	8159	-25%	3411556	6235287	-45%	36.03	70.61	-49%	4.9%
L. Insurance		6927	5310	30%	3909797	2418332	62%	28.45	19.67	45%	3.9%
G. Insurance	11.9	32445	15163	114%	18836823	8374678	125%	94.95	43.63	118%	13.0%
Mutual Fund		2615	2922	-11%	12601494	14261270	-12%	10.66	11.73	-9%	1.5%
Ceramic	27.8	1601	2644	-39%	1290512	2281440	-43%	4.84	9.05	-47%	0.7%
Tannery	68.2	4374	3584	22%	6148681	4339010	42%	85.41	59.13	44%	11.7%
Paper	65.0	3284	3863	-15%	687036	1977877	-65%	19.85	77.34	-74%	2.7%
Travel & Lei	-38.9	1451	1559	-7%	2119047	1701351	25%	8.88	8.12	9%	1.2%
Services & R	18.1	1540	2426	-37%	1705788	3150635	-46%	7.88	13.17	-40%	1.1%
IT	23.8	9627	9107	6%	11908945	10699808	11%	70.08	86.67	-19%	9.6%
Jute	56.5	779	1170	-33%	44904	96154	-53%	1.58	2.88	-45%	0.2%

INDEX MOVER(+)

INSTRUMENT	PRICE	%	INDEX (+)	E.P.S	P/E	N.A.V	NO.# SHARE	Q-Q(G)	MARKET CAP.
BEACONPHAR	241.8	2.9%	2.30	5.2	46.7	12.9	231000000	-14.8%	5586 Cro.
FORTUNE	140.7	4.1%	1.31	4.2	33.8	15.3	162535489	-19.4%	2287 Cro.
GP	328.5	0.1%	1.17	25.3	13.0	31.4	1350300022	-4.7%	44384 Cro.
IPDC	37.7	4.7%	0.91	2.4	15.9	16.3	371091547	4.5%	1399 Cro.
SUMITPOWER	39	1.0%	0.62	4.0	9.7	32.4	1067877239	-1.0%	4165 Cro.
PRAGATIINS	82.4	7.9%	0.57	3.9	21.0	53.1	65590329		540 Cro.
BSRMSTEEL	75.7	0.9%	0.38	10.7	7.1	55.6	375952500	-7.6%	2846 Cro.
MJLBD	89	0.8%	0.37	6.7	13.2	35.6	316752027	-9.9%	2822 Cro.
PROVATIINS	119.9	5.8%	0.33	3.6	32.9	17.6	34751929		417 Cro.
SONALIPAPR	887.3	1.2%	0.32	23.3	38.0	336.9	21963460	-12.4%	1949 Cro.
RELIANCINS	72.6	3.0%	0.32	5.6	13.0	60.8	105161087	3.5%	763 Cro.
RENATA	1342.1	0.1%	0.31	51.2	26.2	230.9	107192983	-9.7%	14386 Cro.
PIONEERINS	105	2.6%	0.30	7.9	13.2	45.1	76978687		808 Cro.
EASTERNINS	83	5.9%	0.29	5.4	15.4	42.5	43110144		358 Cro.
CENTRALINS	50.1	6.8%	0.25	2.7	18.7	23.7	53144823		266 Cro.

INDEX MOVER(-)

INSTRUMENT	PRICE	%	INDEX (-)	E.P.S	P/E	N.A.V	NO.# SHARE	Q-Q(G)	MARKET CAP.
WALTONHIL	1078.5	-0.8%	-3.62	29.5	36.6	243.3	302928343	-20.6%	32671 Cro.
BATBC	580.7	-0.4%	-1.63	27.7	20.9	492.2	540000000	-2.9%	31358 Cro.
ROBI	33.8	-0.6%	-1.51	0.4	79.2	12.6	5237932895		17704 Cro.
LHBL	75.5	-1.2%	-1.51	3.3	22.6	13.4	1161373500	-5.9%	8768 Cro.
TITASGAS	40.8	-1.9%	-1.14	2.9	14.2	70.1	989221831	10.8%	4036 Cro.
BSCCL	213.8	-2.0%	-1.02	12.6	17.0	38.7	164905510	-2.2%	3526 Cro.
EBL	38.7	-1.8%	-0.96	5.6	6.9	36.3	953864468		3691 Cro.
BEXIMCO	152.6	-0.5%	-0.88	17.3	8.8	69.8	876318879	5.5%	13373 Cro.
BSRMLTD	106.2	-1.8%	-0.86	16.2	6.5	97.5	298584626	-5.5%	3171 Cro.
POWERGRID	63.2	-1.3%	-0.82	5.5	11.5	143.8	712726991	-24.5%	4504 Cro.
SQURPHARMA	218.1	-0.3%	-0.77	21.8	10.0	86.0	886451011	-3.5%	19333 Cro.
GPHISPAT	54.9	-2.0%	-0.69	4.3	12.6	17.6	436816480	-4.0%	2398 Cro.
BANKASIA	20.9	-1.4%	-0.50	3.2	6.6	23.3	1165906860		2437 Cro.

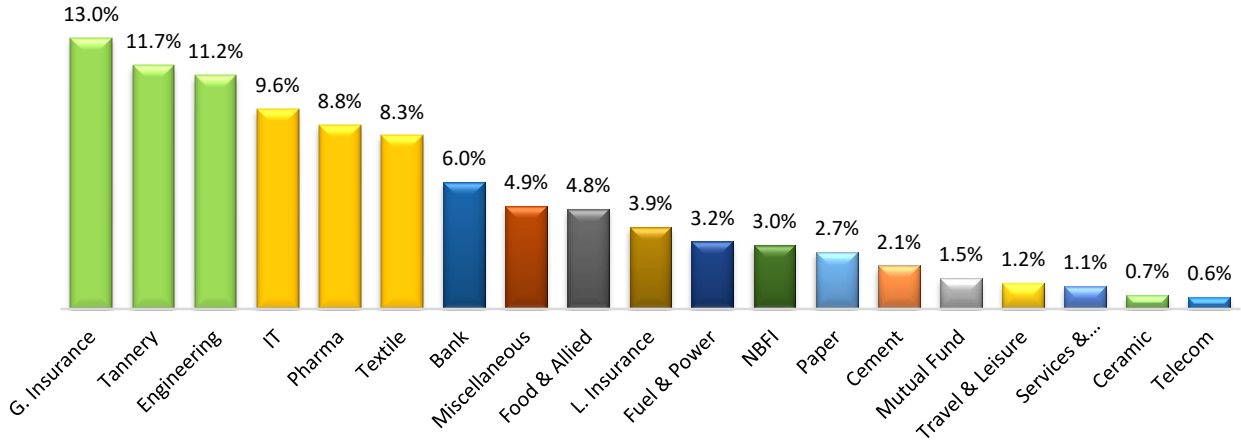
TOP 20 BY GAINER						TOP 20 BY VOLUME				
INSTRUMENT	SECTOR	LTP*	CHANGE	VOLUME	V/TMV	INSTRUMENT	LTP*	HIGH	TRADE	VOLUME
JANATAINS	INSURANC	42.6	8.4%	488,940	0.3%	PREMIERBAN	16.7	17.1	1,840	6,453,312
PRAGATIINS	INSURANC	82.4	7.9%	168,717	0.1%	FORTUNE	140.7	143.0	3,166	5,948,306
CENTRALINS	INSURANC	50.1	6.8%	322,722	0.2%	KEYACOSMET	7.7	7.9	708	4,727,289
AGRANINS	INSURANC	50.9	6.5%	309,115	0.2%	BDCOM	40.7	41.4	1,580	3,746,981
PARAMOUNT	INSURANC	62.0	6.0%	163,980	0.1%	ADVENT	29.6	29.8	1,577	3,536,320
EASTERNINS	INSURANC	83.0	5.9%	450,522	0.3%	FUWANGFOOD	23.4	23.8	1,170	3,402,156
PROVATIINS	INSURANC	119.9	5.8%	2,174,270	1.3%	AAMRATECH	40.5	41.2	1,287	2,939,805
GLOBALINS	INSURANC	47.4	4.9%	342,731	0.2%	DSSL	20.8	21.6	982	2,913,612
IPDC	NBFI	37.7	4.7%	1,126,845	0.7%	GENEXIL	124.8	128.9	4,088	2,678,010
PADMALIFE	INSURANC	51.4	4.7%	938,032	0.6%	SEMILLECMF	11.3	11.5	519	2,421,941
TAKAFULINS	INSURANC	73.9	4.7%	98,754	0.1%	PROVATIINS	119.9	124.6	1,535	2,174,270
UNITEDINS	INSURANC	52.9	4.5%	31,195	0.0%	NAHEEACP	70.2	70.8	1,900	2,112,639
PHENIXINS	INSURANC	50.7	4.3%	126,859	0.1%	UNIONBANK	12.1	12.2	1,160	2,032,392
SONARBAINS	INSURANC	63.8	4.2%	215,698	0.1%	GSPFINANCE	28.2	28.4	475	2,014,604
ISLAMIINS	INSURANC	54.4	4.2%	273,904	0.2%	EBLNRBMF	6.4	6.6	153	1,915,554
BGIC	INSURANC	50.0	4.2%	375,477	0.2%	IFIC	13.6	13.9	865	1,805,741
BIFC	NBFI	7.5	4.2%	35,000	0.0%	DELTASPINN	9.8	9.9	350	1,798,696
FORTUNE	TANNERY	140.7	4.1%	5,948,306	3.6%	LHBL	75.5	76.4	2,661	1,782,397
PURABIGEN	INSURANC	35.6	4.1%	500,589	0.3%	BEXIMCO	152.6	154.7	2,731	1,704,210
PRIMEINSUR	INSURANC	84.8	4.0%	151,471	0.1%	BRACBANK	49.6	50.3	255	1,689,834
TOP 20 BY TURNOVER(Cro.)						TOP LOSER				
INSTRUMENT	SECTOR	LTP*	VALUE	VOLUME	V/TO	INSTRUMENT	LTP*	HIGH	LOW	%
FORTUNE	TANNERY	140.7	82.0	5,948,306	10.2%	ICBAGRANI1	9.8	9.8	9.8	-2.0%
GENEXIL	IT	124.8	33.6	2,678,010	4.2%	MONOSPOOL	250.0	253.0	250.0	-2.0%
BEXIMCO	MISCELLAN	152.6	26.1	1,704,210	3.3%	TAMIJTEX	259.9	263.9	259.9	-2.0%
PROVATIINS	INSURANC	119.9	25.3	2,174,270	3.2%	BDAUTOCA	143.5	146.0	143.5	-2.0%
BDLAMPS	ENGINEERI	355.4	18.8	530,186	2.4%	SAMORITA	94.1	96.4	94.1	-2.0%
SONALIPAPR	PAPER	887.3	17.5	197,709	2.2%	NORTHERN	272.9	280.8	272.9	-2.0%
BDCOM	IT	40.7	15.3	3,746,981	1.9%	MEGHNACEM	74.5	76.0	74.5	-2.0%
NAHEEACP	ENGINEERI	70.2	14.7	2,112,639	1.8%	BSCCL	213.8	217.8	213.8	-2.0%
ORIONPHARM	PHARMA	102.3	14.1	1,376,940	1.8%	AAMRANET	44.8	46.2	44.8	-2.0%
LHBL	CEMENT	75.5	13.5	1,782,397	1.7%	GPHISPAT	54.9	55.9	54.9	-2.0%
AAMRATECH	IT	40.5	12.0	2,939,805	1.5%	BLOCK TRADE			30-Mar-22	
PREMIERBAN	BANK	16.7	10.8	6,453,312	1.3%	INSTRUMENT	Cro.	INSTRUMENT	Cro.	
ANWARGALV	ENGINEERI	396.6	10.6	267,586	1.3%	FORTUNE	16.77	PENINSULA	1.70	
ADVENT	PHARMA	29.6	10.4	3,536,320	1.3%	SONALIPAPR	11.11	ADVENT	1.43	
BRACBANK	BANK	49.6	8.5	1,689,834	1.1%	RENATA	7.68	ORIONPHARM	1.38	
ASIAINS	INSURANC	83.3	8.3	996,554	1.0%	SOUTHEASTB	5.46	GBBPOWER	0.97	
FAREASTLIF	INSURANC	96.8	8.1	837,274	1.0%	IBNSINA	5.01	BEACONPHAR	0.56	
FUWANGFOOD	FOOD & AL	23.4	8.0	3,402,156	1.0%	BDLAMPS	4.91	PTL	0.54	
PEOPLESINS	INSURANC	66.9	6.8	1,000,000	0.8%	GENEXIL	4.84	OTHER'S TOTAL	4.57	
GPHISPAT	ENGINEERI	54.9	6.2	1,125,657	0.1%	EXIMBANK	3.22	TOTAL =	70.15	
INTERNATIONAL COMMODITY MARKET @GMT 9:15 AM						INTERNATIONAL STOCK MARKET @GMT 9:15 AM				
Commodities	30-Mar-22	Change	%			Indices	30-Mar-22	%	Point (+/-)	
Crude Oil	\$ 106.85	\$ 2.61	2.5%			Dow Jones Indu	35294.19	0.97%	338.30	
Brent Oil	\$ 112.70	\$ 2.47	2.2%			S&P 500	4631.60	1.23%	56.08	
Natural Gas	\$ 5.38	\$.05	0.9%			NASDAQ Comp	14619.64	1.84%	264.73	
Gold	\$ 1923.90	\$ 5.90	0.3%			FTSE 100	7535.90	-0.02%	-1.35	
Silver	\$ 24.99	\$.25	1.0%			Nikkei 225	28027.25	-0.80%	-225.17	
Sugar	\$ 19.24	\$.13	0.7%			Shenzhen Com	12263.80	3.10%	368.72	
Soybeans	\$ 1648.50	\$ 5.50	0.3%			Hang Seng Inde	22232.03	1.39%	304.40	
Cotton	\$ 136.47	-\$.34	-0.3%			S&P BSE SENSE	58546.44	1.04%	602.79	

SECTOR & CAP. WISE MOST ACTIVE STOCK [V/TPS]

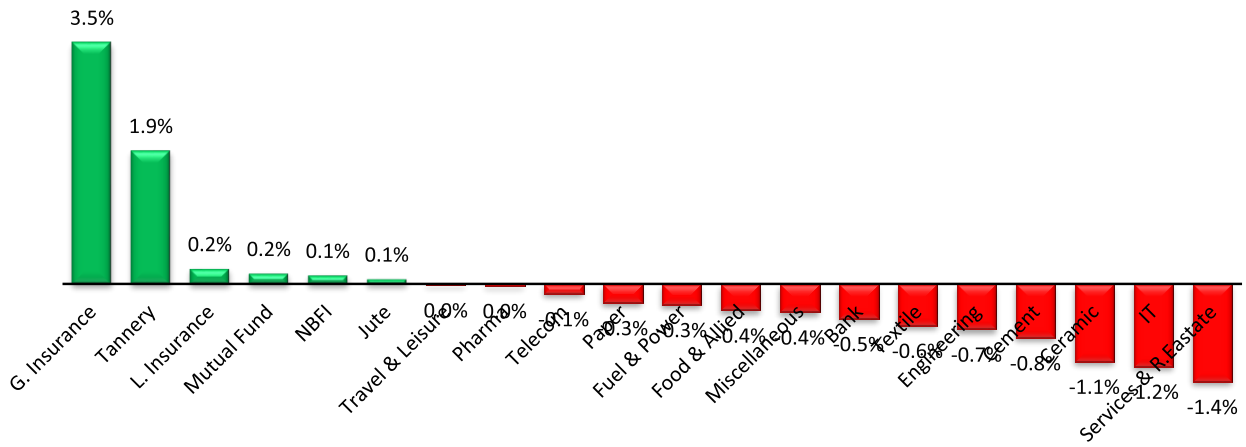
BANK							TEXTILE						
SI	INSTRUMENT	PRICE	VOLUME	VALUE	V/TPS	%	SI	INSTRUMENT	PRICE	VOLUME	VALUE	V/TPS	%
1	BRACBANK	50.0 N	1689834	8.45	2.4%	-1.0%	1	APEXSPINN	155.3 N	83329	1.3	4.4%	-1.9%
2	PREMIERBAN	16.7 N	6453312	10.81	1.4%	-1.8%	2	HRTEX	74.0 N	450654	3.3	4.1%	-0.9%
3	UNIONBANK	12.1 N	2032392	2.46	0.6%	0.0%	3	SHEPHERD	28.9 N	942654	2.8	3.9%	-0.3%
4	MERCANBANK	17.1 N	1552788	2.66	0.4%	-0.6%	4	AL-HAJTEX	105.2 N	404702	4.3	3.1%	-0.8%
5	UTTARABANK	28.7 N	854743	2.45	0.4%	0.0%	5	QUEENSOUTH	24.3 N	812866	2.0	3.1%	-1.6%
FINANCE							INSURANCE						
SI	INSTRUMENT	PRICE	VOLUME	VALUE	V/TPS	%	SI	INSTRUMENT	PRICE	VOLUME	VALUE	V/TPS	%
1	GSPFINANCE	28.2 N	2014604	5.68	2.4%	0.0%	1	PROVATIINS	119.9 Y	2174270	25.3	13.5%	5.8%
2	IPDC	37.7 Y	1126845	4.24	2.2%	4.7%	2	PADMALIFE	51.4 N	938032	4.7	5.0%	4.7%
3	BAYLEASING	27.7 N	647297	1.81	1.2%	-1.4%	3	ASIAINS	83.3 N	996554	8.3	4.6%	2.7%
4	PRIMEFIN	12.9 N	931614	1.19	1.1%	0.0%	4	PEOPLESINS	66.9 N	1000000	6.8	4.0%	0.0%
5	NHFIL	44.0 N	250520	1.11	0.8%	0.0%	5	FAREASTLIF	96.8 N	837274	8.1	3.8%	1.4%
POWER							PHARMA						
SI	INSTRUMENT	PRICE	VOLUME	VALUE	V/TPS	%	SI	INSTRUMENT	PRICE	VOLUME	VALUE	V/TPS	%
1	INTRACO	21.0 N	557640	1.17	1.2%	-0.5%	1	ADVENT	29.6 Y	3536320	10.4	7.4%	2.4%
2	LINDEBD	1581.4 N	20658	3.27	1.1%	0.6%	2	PHARMAID	846.6 N	44130	3.7	2.3%	-1.4%
3	POWERGRID	63.2 N	719237	4.56	1.1%	-1.3%	3	IMAMBUTTOI	35.1 N	78537	0.3	1.7%	2.0%
4	CVOPRL	200.3 N	110093	2.22	1.0%	-1.9%	4	ORIONPHARM	102.3 N	1376940	14.1	1.4%	-0.8%
5	DOREENPWR	71.8 N	214538	1.54	0.9%	-1.0%	5	SILVAPHL	21.4 N	614606	1.3	1.4%	-0.5%
ENGINEERING							FOOD						
SI	INSTRUMENT	PRICE	VOLUME	VALUE	V/TPS	%	SI	INSTRUMENT	PRICE	VOLUME	VALUE	V/TPS	%
1	BDLAMPS	355.4 N	530186	18.85	18.8%	0.4%	1	BEACHHATCH	41.4 N	260662	1.1	6.7%	-1.4%
2	NAHEEACP	70.2 Y	2112639	14.71	6.5%	3.1%	2	GEMINISEA	484.8 Y	123036	5.9	4.5%	2.4%
3	ANWARGALV	396.6 N	267586	10.59	4.9%	0.6%	3	FUWANGFOO	23.4 N	3402156	8.0	3.7%	-0.4%
4	BBS	24.1 N	1604584	3.91	3.9%	-0.8%	4	APEXFOODS	218.8 N	108743	2.4	3.5%	0.3%
5	YPL	22.3 N	1204197	2.70	2.7%	-1.8%	5	LOVELLO	39.4 N	859484	3.4	2.8%	-1.7%
MISCELLANEOUS							IT						
SI	INSTRUMENT	PRICE	VOLUME	VALUE	V/TPS	%	SI	INSTRUMENT	PRICE	VOLUME	VALUE	V/TPS	%
1	BSC	109.4 N	448772	4.95	1.2%	-1.2%	1	AAMRATECH	40.5 N	2939805	12.0	13.6%	-1.9%
2	GQBALLPEN	117.8 N	62495	0.74	1.2%	-1.1%	2	BDCOM	40.7 N	3746981	15.3	13.0%	-1.9%
3	ARAMIT	337.2 N	14560	0.49	1.2%	-1.5%	3	GENEXIL	124.8 N	2678010	33.6	5.7%	-1.6%
MUTUAL FUND							CEMENT						
SI	INSTRUMENT	PRICE	VOLUME	VALUE	V/TPS	%	SI	INSTRUMENT	PRICE	VOLUME	VALUE	V/TPS	%
1	SEMILLECMF	11.3 Y	2421941	2.72	6.3%	3.7%	1	ARAMITCEM	35.1 N	145820	0.5	1.0%	-1.7%
2	PF1STMF	11.6 N	1518305	1.76	5.1%	-0.9%	2	LHBL	75.5 N	1782397	13.5	0.8%	-1.2%
3	EBLNRBMF	6.4 N	1915554	1.23	1.8%	0.0%	3	MEGHNACEM	74.5 N	23113	0.2	0.5%	-2.0%
VOLUME BASED ON PUBLIC HOLDING RANK							VOLUME BASED ON PUBLIC HOLDING RANK						
MICRO CAP.							MID CAP.						
SI	INSTRUMENT	PRICE	VOLUME	VALUE	V/TPS	%	SI	INSTRUMENT	PRICE	VOLUME	VALUE	V/TPS	%
1	BEACHHATCH	41.4 N	260662	1.08	5.4%	-1.4%	1	NAHEEACP	70.2 Y	2112639	14.7	6.5%	3.1%
2	GEMINISEA	484.8 N	123036	5.88	5.0%	2.4%	2	AAMRANET	44.8 N	713020	3.2	4.7%	-2.0%
3	APEXFOODS	218.8 N	108743	2.37	4.7%	0.3%	3	BBS	24.1 N	1604584	3.9	3.9%	-0.8%
4	YPL	22.3 N	1204197	2.70	4.4%	-1.8%	4	PENINSULA	35.5 N	1347222	4.8	3.1%	1.4%
5	AL-HAJTEX	105.2 N	404702	4.28	3.7%	-0.8%	5	QUASEMIND	55.6 N	596393	3.3	1.7%	1.8%
SMALL CAP.							LARGE CAP.						
SI	INSTRUMENT	PRICE	VOLUME	VALUE	V/TPS	%	SI	INSTRUMENT	PRICE	VOLUME	VALUE	V/TPS	%
1	BDLAMPS	355.4 N	530186	18.8	18.8%	0.4%	1	FORTUNE	140.7 Y	5948306	82.0	7.4%	4.1%
2	AAMRATECH	40.5 N	2939805	12.0	13.6%	-1.9%	2	GENEXIL	124.8 N	2678010	33.6	5.7%	-1.6%
3	BDCOM	40.7 N	3746981	15.3	13.0%	-1.9%	3	ORIONPHARM	102.3 N	1376940	14.1	1.4%	-0.8%
4	ADVENT	29.6 Y	3536320	10.4	7.4%	2.4%	4	BSC	109.4 N	448772	5.0	1.2%	-1.2%
5	ANWARGALV	396.6 N	267586	10.6	4.9%	0.6%	5	RAKCERAMIC	44.9 N	637788	2.9	1.2%	-1.1%
▲ FIND NEW UPTREND SHARE OR BREAKOUT SHARE							AVOID OVER PRICED SHARE						

SECTOR LEADER BY TURNOVER											
BANK						TEXTILE					
SL INSTRUMEN'	PRICE	VALUE	VOLUME	V/TPS	%	SL INSTRUMEN'	PRICE	VALUE	VOLUME	V/TPS	%
1 PREMIERBAN	16.7	10.8	6453312	1.4%	-1.8%	1 DSSL	20.8	6.1	2913612	3.0%	-1.4%
2 BRACBANK	50.0	8.5	1689834	2.4%	-1.0%	2 AL-HAJTEX	105	4.3	404702	3.1%	-0.8%
3 MERCANBAN	17.1	2.7	1552788	0.4%	-0.6%	3 HRTEX	74	3.3	450654	4.1%	-0.9%
4 UNIONBANK	12.1	2.5	2032392	0.6%	0.0%	4 MHSML	36.4	3.3	898548	2.2%	-1.1%
FINANCE						INSURANCE					
1 GSPFINANCE	28.2	5.7	2014604	2.4%	0.0%	1 PROVATIINS	120	25.3	2174270	13.5%	5.8%
2 IPDC	37.7	4.2	1126845	2.2%	4.7%	2 ASIAINS	83.3	8.3	996554	4.6%	2.7%
3 LANKABAFIN	32.2	2.5	779796	0.3%	0.0%	3 FAREASTLIF	96.8	8.1	837274	3.8%	1.4%
4 BAYLEASING	27.7	1.8	647297	1.2%	-1.4%	4 PEOPLESINS	66.9	6.8	1000000	4.0%	0.0%
POWER						PHARMA					
1 POWERGRID	63.2	4.6	719237	1.1%	-1.3%	1 ORIONPHARI	102	14.1	1376940	1.4%	-0.8%
2 LINDEBD	1581	3.3	20658	1.1%	0.6%	2 ADVENT	29.6	10.4	3536320	7.4%	2.4%
3 CVOPRL	200.3	2.2	110093	1.0%	-1.9%	3 BXPBARMA	177	4.8	270628	0.3%	-0.3%
4 DOREENPWR	71.8	1.5	214538	0.9%	-1.0%	4 BEACONPHA	242	4.7	195906	0.2%	2.9%
ENGINEERING						FOOD					
1 BDLAMPS	355.4	18.8	530186	18.8%	0.4%	1 FUWANGFOC	23.4	8.0	3402156	3.7%	-0.4%
2 NAHEEACP	70.2	14.7	2112639	6.5%	3.1%	2 GEMINISEA	485	5.9	123036	4.5%	2.4%
3 ANWARGALV	396.6	10.6	267586	4.9%	0.6%	3 BATBC	581	3.6	61399	0.2%	-0.4%
4 GPHISPAT	54.9	6.2	1125657	0.8%	-2.0%	4 LOVELLO	39.4	3.4	859484	2.8%	-1.7%
MISCELLANEOUS						IT					
1 BEXIMCO	152.6	26.1	1704210	0.5%	-0.5%	1 GENEXIL	125	33.6	2678010	13.6%	-1.6%
2 BSC	109.4	5.0	448772	1.2%	-1.2%	2 BDCOM	40.7	15.3	3746981	13.0%	-1.9%
3 #N/A	#N/A	1.1	393833	1.0%	#N/A	3 AAMRATECH	40.5	12.0	2939805	5.7%	-1.9%
4 AMANFEED	44.2	0.9	200698	0.6%	-0.7%	4 AGNISYSL	26.2	3.3	1248555	4.7%	-1.9%
MUTUAL FUND						CEMENT					
1 SEMLLECMF	11.3	2.7	2421941	6.3%	3.7%	1 LHBL	75.5	26.6	1782397	1.0%	-1.2%
2 PF1STMF	11.6	1.8	1518305	5.1%	-0.9%	2 ARAMITCEM	35.1	3.0	145820	0.8%	-1.7%
MARKET CAP. & CORRELATION WISE TURNOVER LEADER											
MICRO CAP.						MID CAP.					
1 GEMINISEA	484.8	5.88	123036	5.0%	2.4%	1 NAHEEACP	70.2	14.7	2112639	7%	3.1%
2 AL-HAJTEX	105.2	4.28	404702	3.7%	-0.8%	2 PENINSULA	35.5	4.8	1347222	3%	1.4%
3 YPL	22.3	2.70	1204197	4.4%	-1.8%	3 BBS	24.1	3.9	1604584	4%	-0.8%
4 APEXFOODS	218.8	2.37	108743	4.7%	0.3%	4 KEYACOSME	7.7	3.7	4727289	1%	-1.3%
5 SHURWID	21.3	1.10	516202	1.4%	-1.8%	5 QUASEMIND	55.6	3.3	596393	2%	1.8%
SMALL CAP.						LARGE CAP.					
1 BDLAMPS	355.4	18.8	530186	18.8%	0.4%	1 FORTUNE	141	82.0	5948306	7.4%	4.1%
2 SONALIPAPR	887.3	17.5	197709	3.6%	1.2%	2 GENEXIL	125	33.6	2678010	5.7%	-1.6%
3 BDCOM	40.7	15.3	3746981	13.0%	-1.9%	3 BEXIMCO	153	26.1	1704210	0.5%	-0.5%
4 AAMRATECH	40.5	12.0	2939805	13.6%	-1.9%	4 ORIONPHARI	102	14.1	1376940	1.4%	-0.8%
5 ANWARGALV	396.6	10.6	267586	4.9%	0.6%	5 LHBL	75.5	13.5	1782397	0.8%	-1.2%
LOW PAID-UP & Z-CATEGORY LEADER											
LOW PAID-UP						Z CATEGORY					
1 BDLAMPS	355.4	18.85	530186	18.8%	0.4%	1 SUNLIFEINS	46	2.4	524885	4.3%	1.5%
2 SONALIPAPR	887.3	17.46	197709	3.6%	1.2%	2 ALLTEX	28.6	1.4	482108	1.8%	-1.7%
3 ANWARGALV	396.6	10.59	267586	4.9%	0.6%	3 BEACHHATCH	41.4	1.1	260662	6.7%	-1.4%
4 GEMINISEA	484.8	5.88	123036	4.5%	2.4%	4 CNATEX	11.1	0.9	794726	0.5%	-1.8%
5 AL-HAJTEX	105.2	4.28	404702	3.1%	-0.8%	5	0	#N/A	0	0.0%	0.0%
6 PAPERPROC	281.3	4.07	143694	2.5%	-1.9%	6 GENNEXT	6.5	0.4	577272	0.2%	0.0%

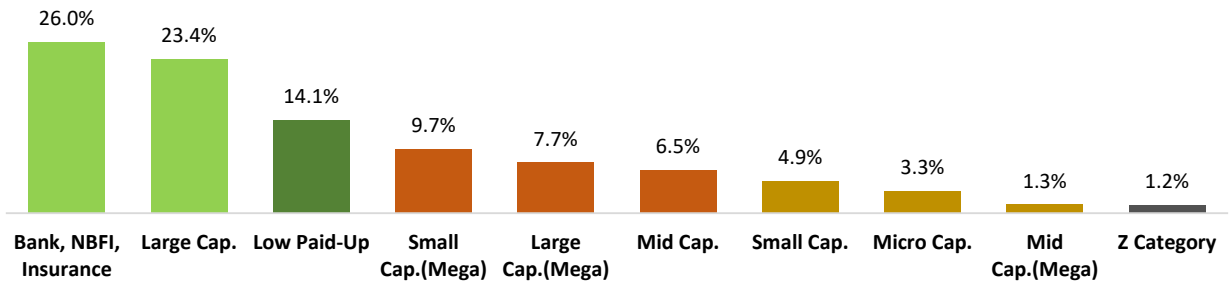
SECTOR TURNOVER %



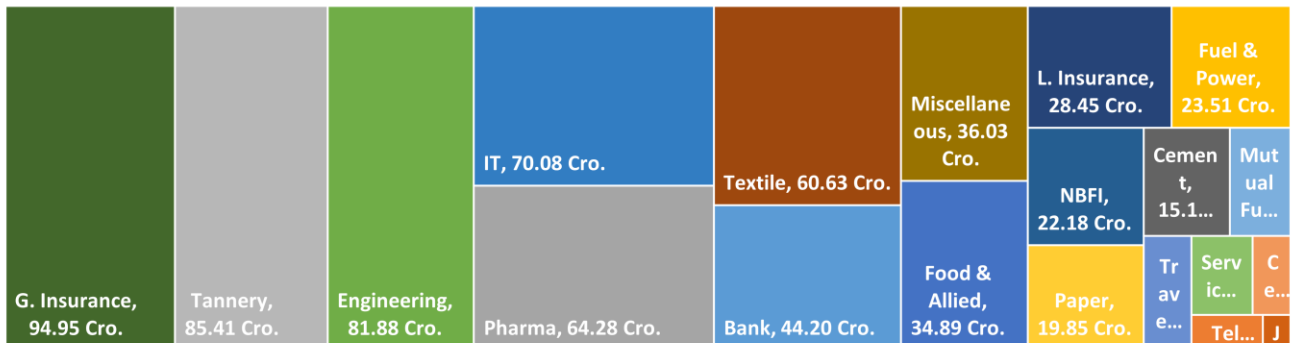
SECTOR RETURN



MARKET CAP. WISE TURNOVER



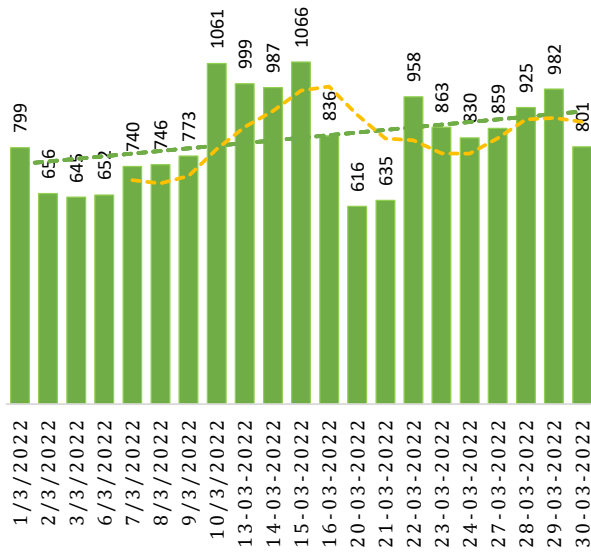
SECTOR TURNOVER VALUE



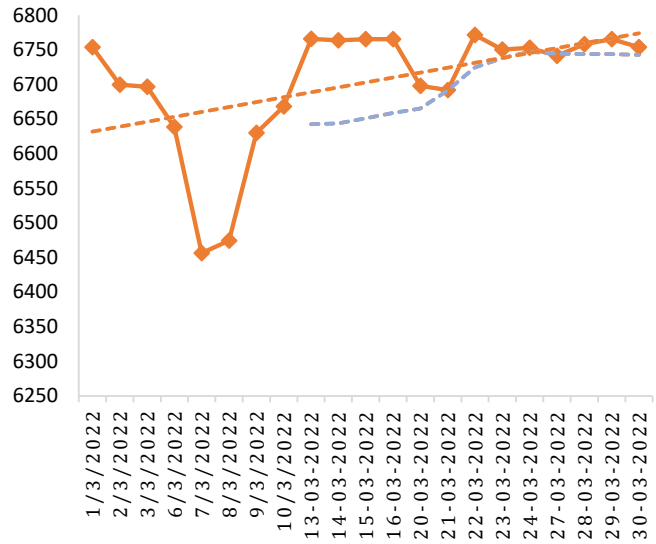
MARKET CHART

DSEX Index Down Trend

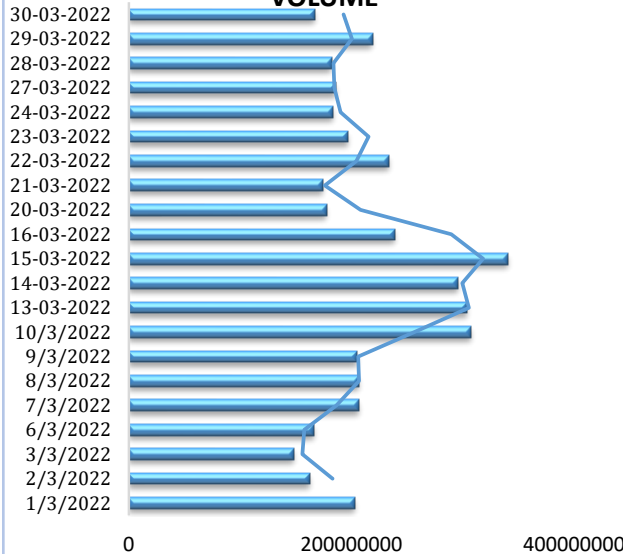
TURNOVER (MN)



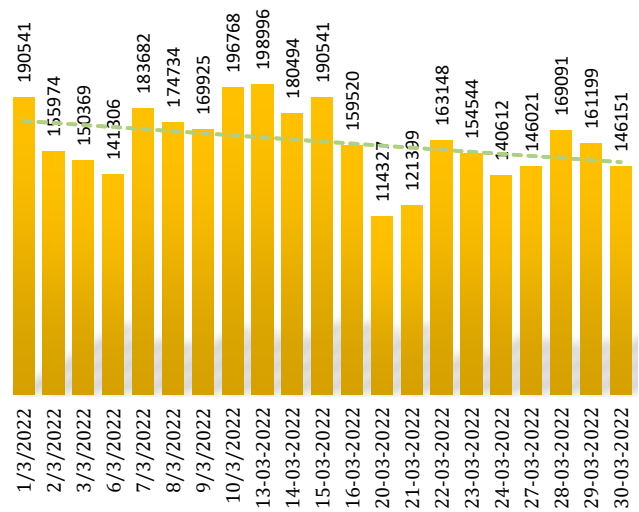
DSEX CHART



VOLUME



TRADE



Capital Market Research Department

Mohammad Younus Ali
Shah Md. Aman Ullah

Chief Operating Officer
Research Analyst

younus3009@gmail.com
aman_dsr@yahoo.com
aman@mikasecurities.net
Mob. No: '01937952676

Disclaimer

We, the team of Research Analyst and author, hereby certify that all of the views expressed in this report accurately reflect our views about the subject, which is based on publicly available data and information. But we do not guarantee that such information is accurate or complete. Any opinions expressed in this report are subject to change without prior notice.

This Document/Report/Recommendations is published by MSL for private circulation and only for information purpose and MSL do not solicit any trading or investment advice via this report/document. The securities and strategies discussed and opinions expressed in this report may not be suitable for all investors.